



SUEZ CANAL ECONOMIC ZONE

Dr. Ahmed M. Darwish

AGENDA



History



Objective



Legal Framework



Activities



Working Environment

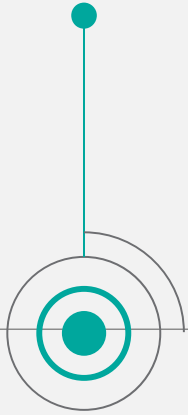


Current Phase



HISTORY

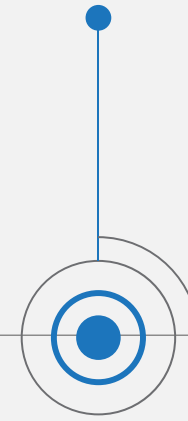
1998
Idea



2003
First Trial



2015
Second Trial



2002
Law

2015
Modified Law



OBJECTIVE

Conducive Environment



Investor Relation Management

Modernized Interpretation of the Law

No Bureaucracy No paperwork



LEGAL FRAMEWORK

**Flexible
Autonomous
Decision in a single place**



WORKING ENVIROMENT



**Fast Decision
Making**



**Flexible Business
Models / Partnership**



**Free Zone
No Customs**



**No Customs on value add
when exporting to Egypt**



**22.5 % Corporate Tax
No VAT**



ACTIVITIES



Regulatory



Registration &
Licensing



Infrastructure



Investment



Dispute resolution



Tax Collection



Ports



CURRENT PHASE

CURRENT PHASE

- **461 Sq km**

- **6 ports**

Hamburg

Rotterdam

S
u
e
z
C
a
n
a
l

Shanghai

Hong Kong

Jabal Ali

Shenzhen

Panama

Singapore

Opportunities across all sectors



Port & Logistics



Maritime-related Services



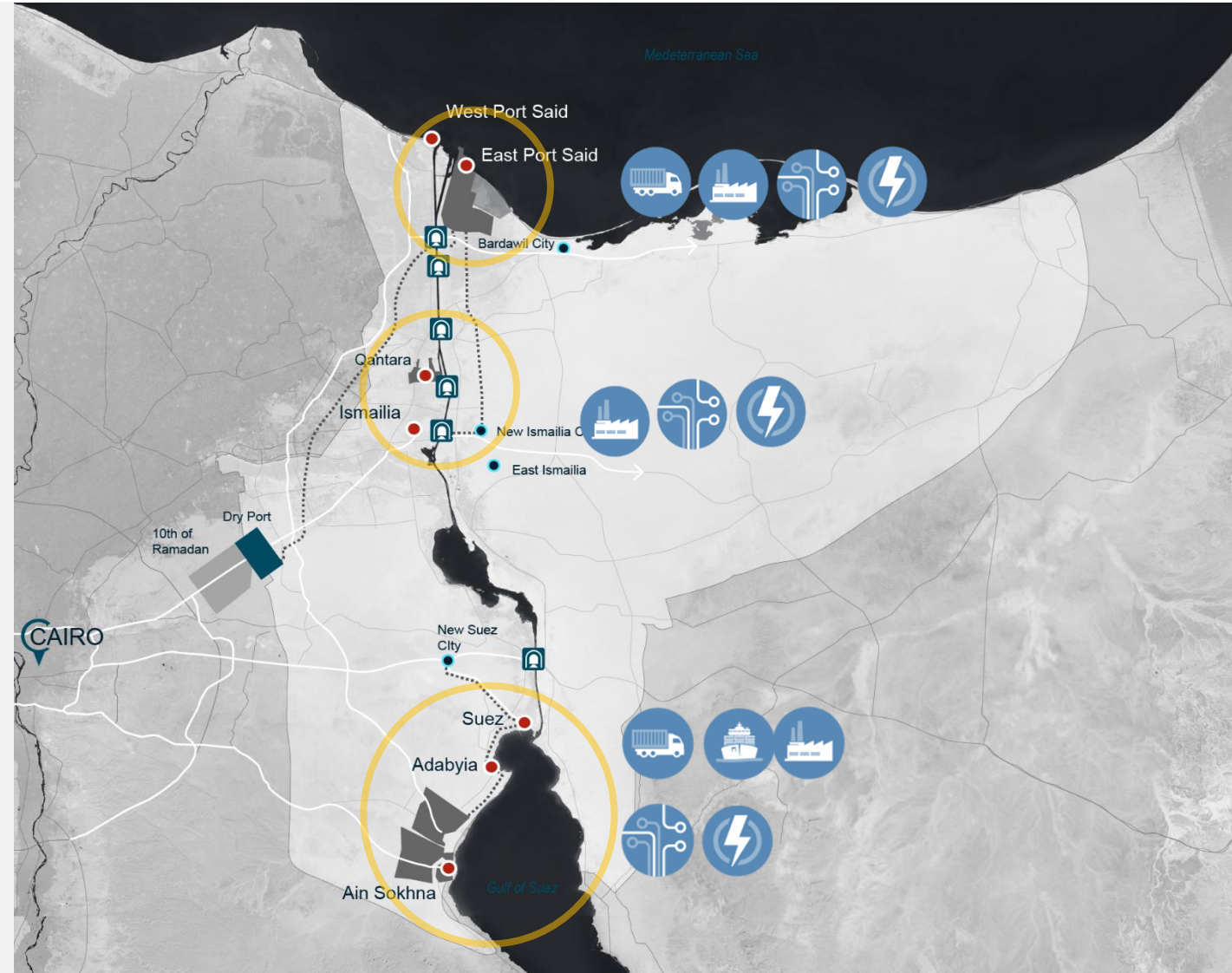
Manufacturing



ICT

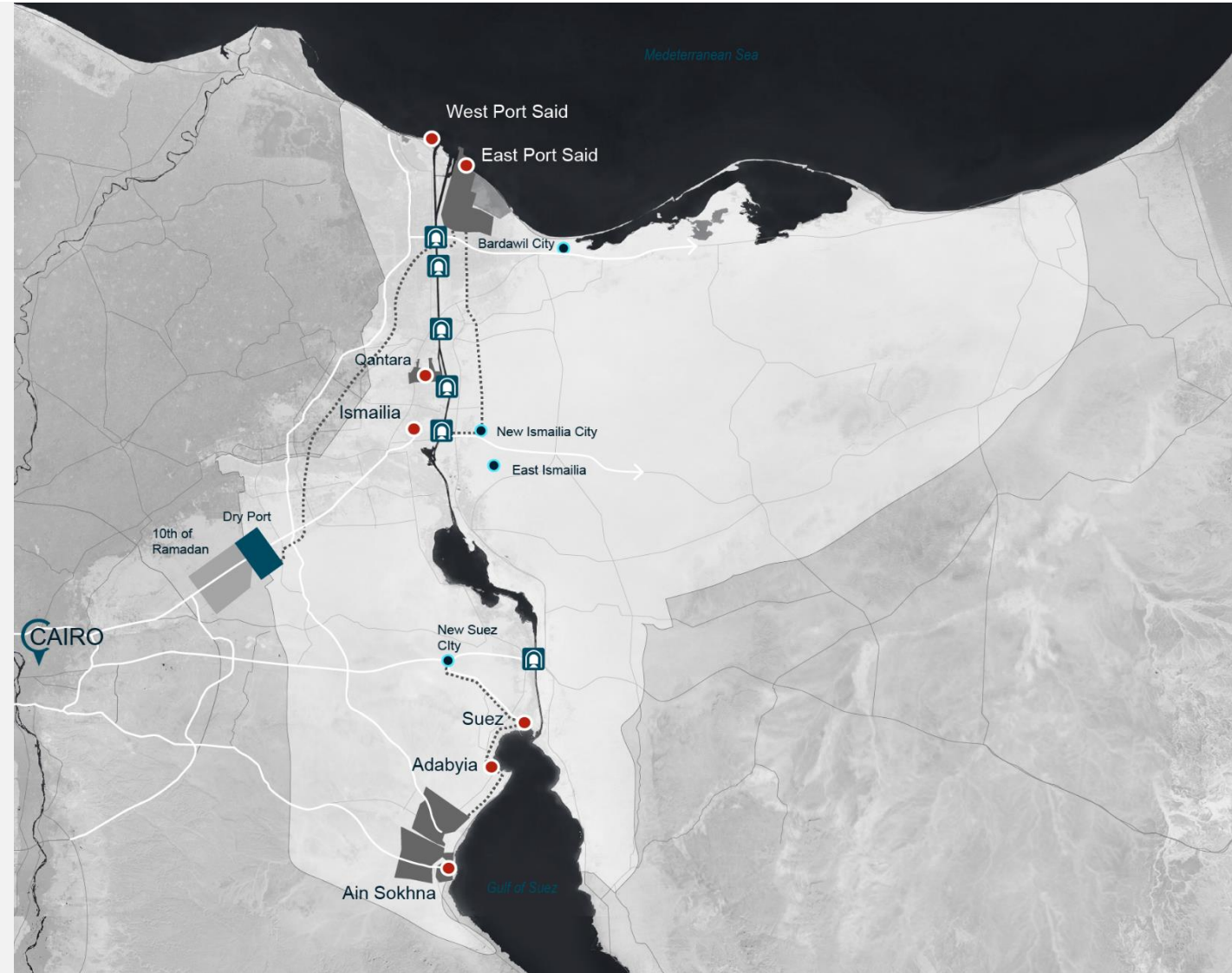


Energy



Connectivity

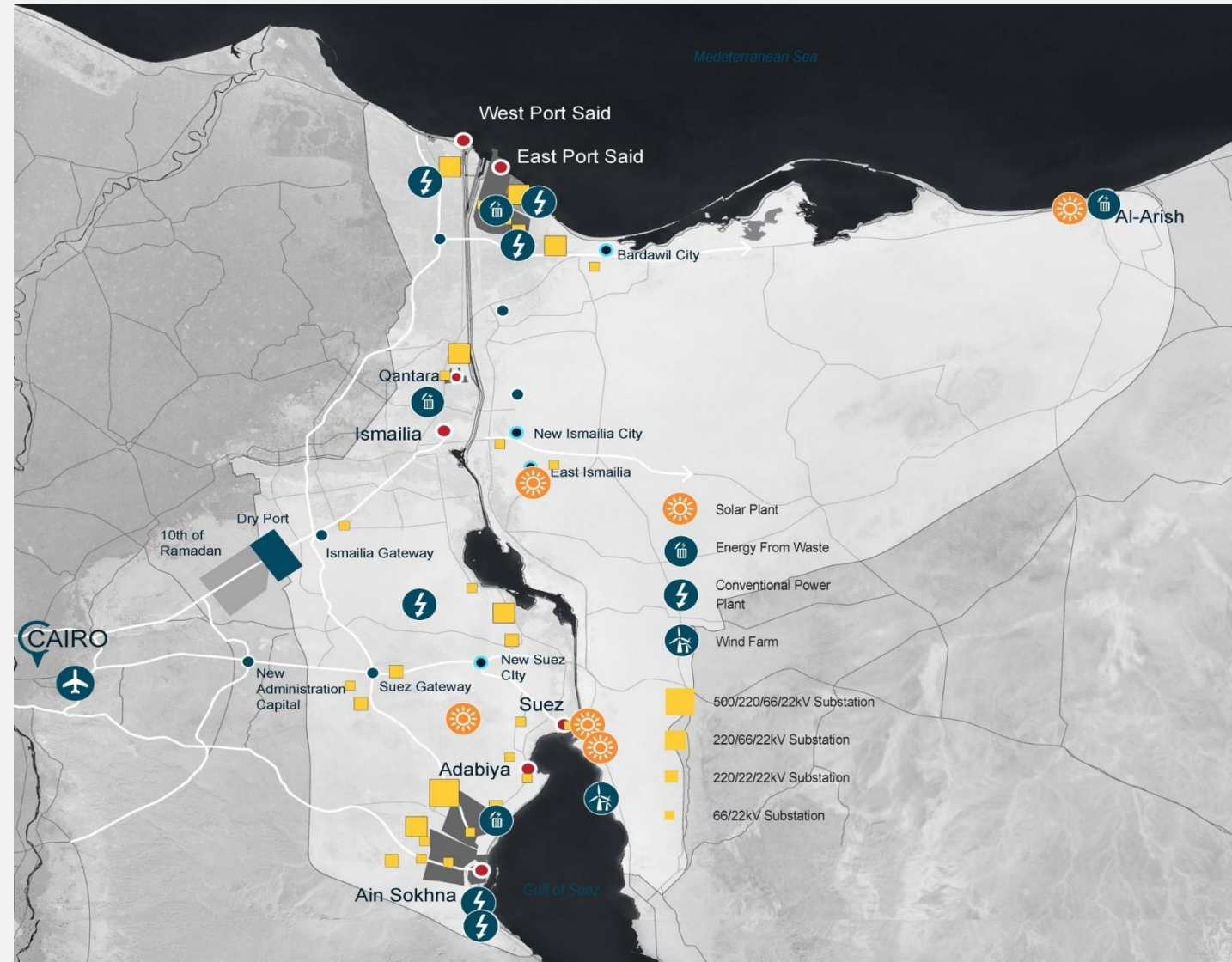
- The SCZone is well connected to Cairo with a good network of express ways.
- The Government is constructing new express way to Port-Said and upgrading the existing one
- 6 new tunnels are being constructed to connect the east and west of the SCZone



Energy

Delivering this strategy will generate significant demand for power creating numerous opportunities – particularly in clean energies.

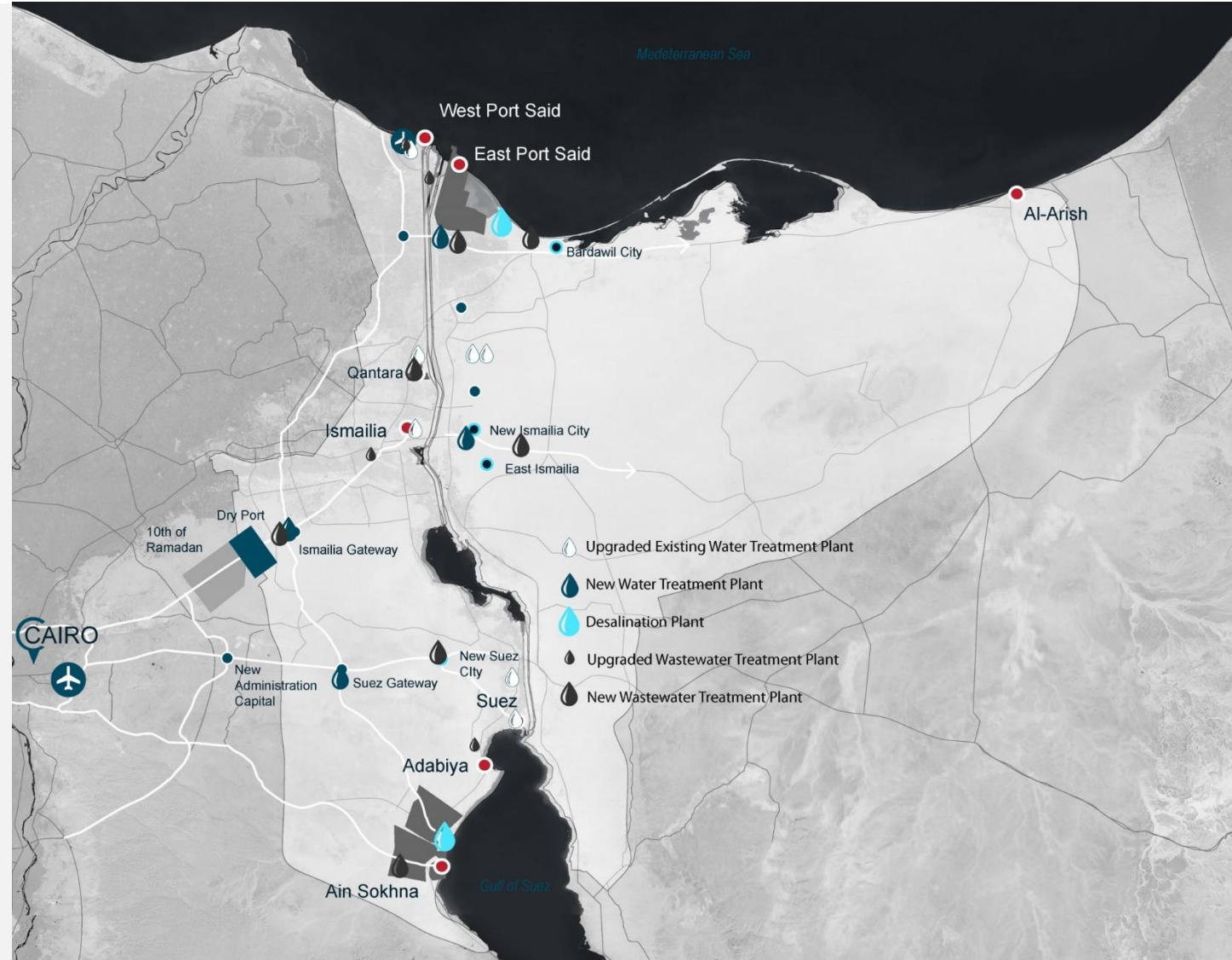
Additional demand for power estimated at around **6GW** over the next 15 years in the SCZone



Water & Wastewater

Equally, numerous opportunities exist for investment in water and wastewater treatment plants.

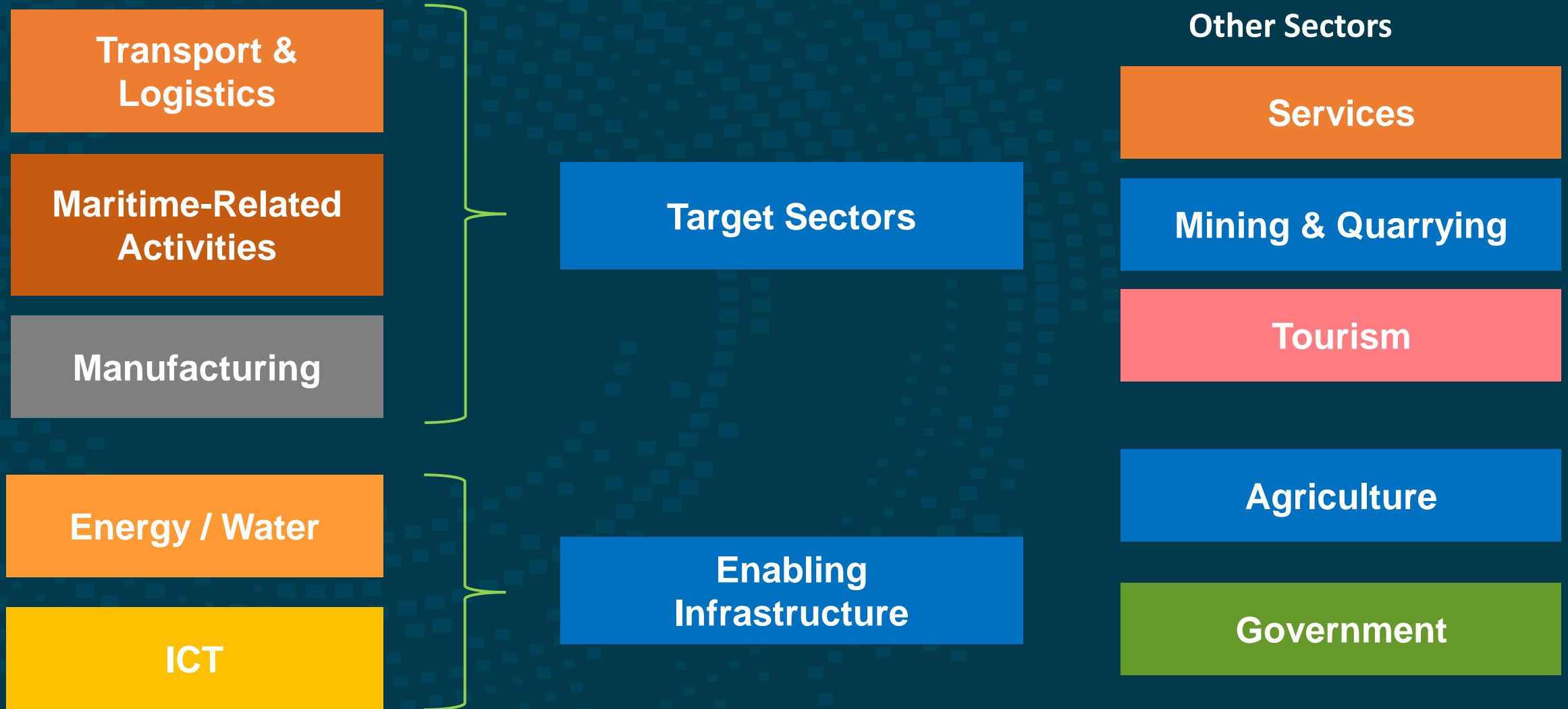
Increase in demand over the next 15 years:
Water: + 1.5 million cubic metres per day



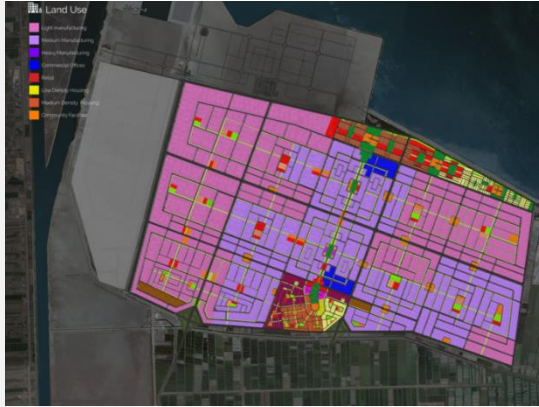
**Mediterranean
Eastern Africa
SA & Gulf
Eastern Europe**



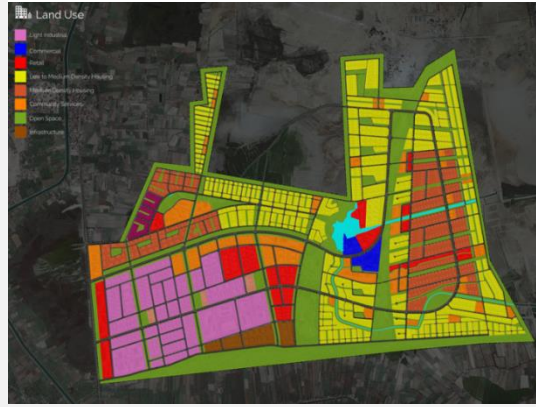
SELECTED SECTORS



Industrial Area East Port Said



Industrial Area Qantara



Industrial Area Ain Sokhna



Each has its own

Flavour

Character

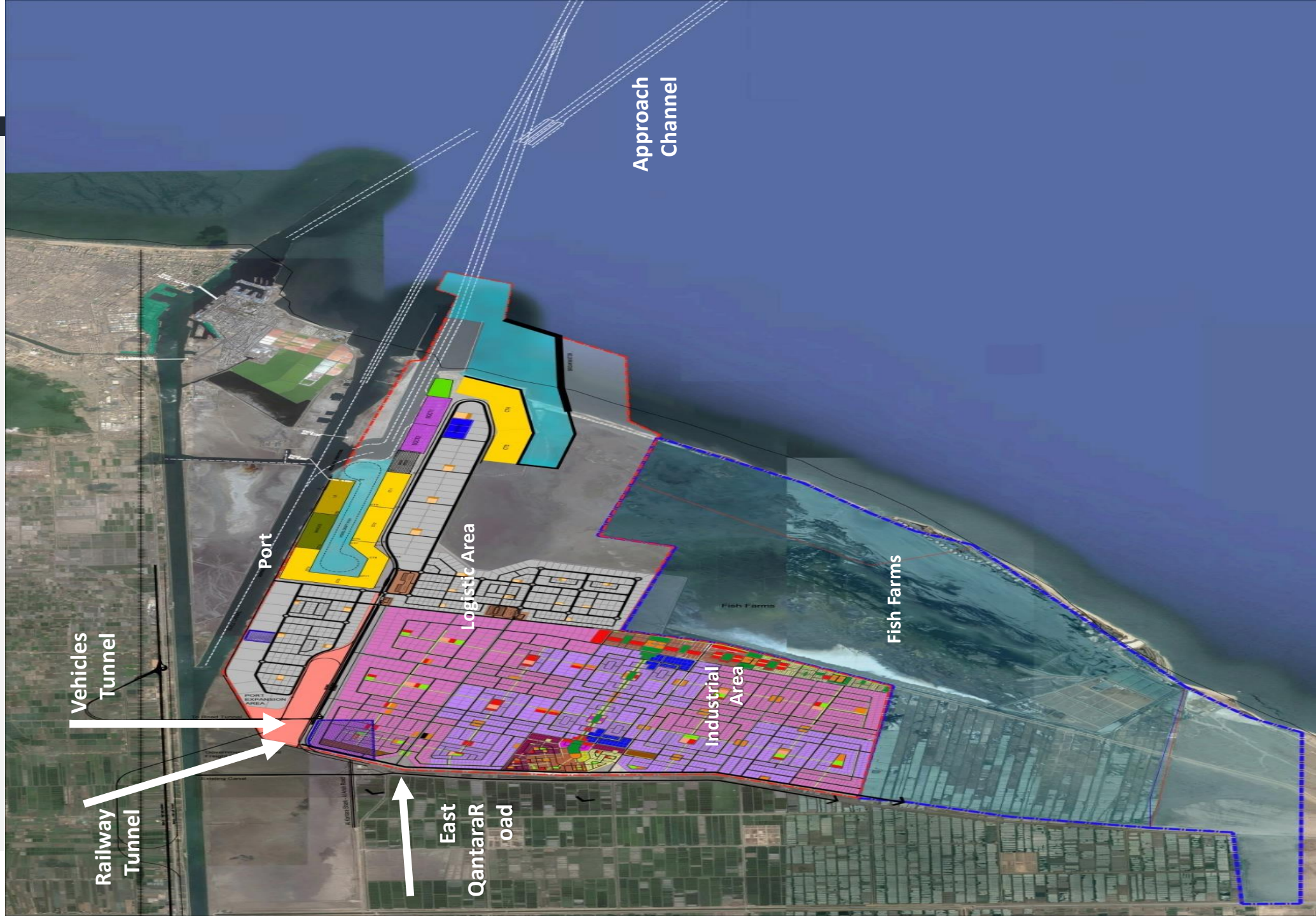
Style

Guaranteed ...

your business will fall somewhere



Side Channel
Terminal 1
Terminal 2
Terminal 3
Logistics
Industrial
Housing 1
Housing 2
Tunnels



Port

- **Third Terminal**
- **RoRo**
- **Bunker**

Logistics

Infrastructure

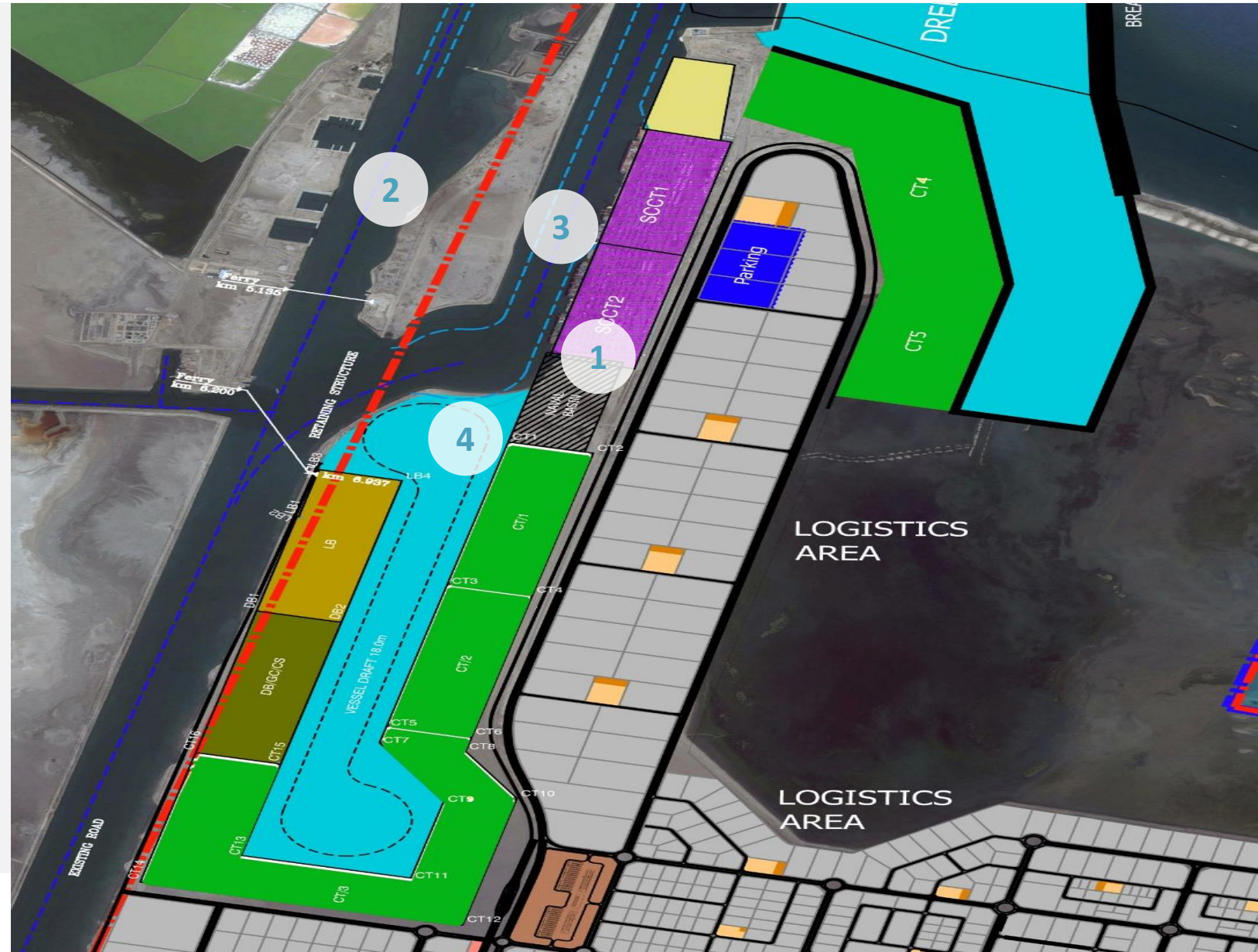
- **Smart Infrastructure**
- **Water Desalination**
- ...

Industry

- **Industrial Developer**
- **Automotive**
- **Pharmaceutical**
- **Garment / Sports**
- **Electronics**
- **Green**

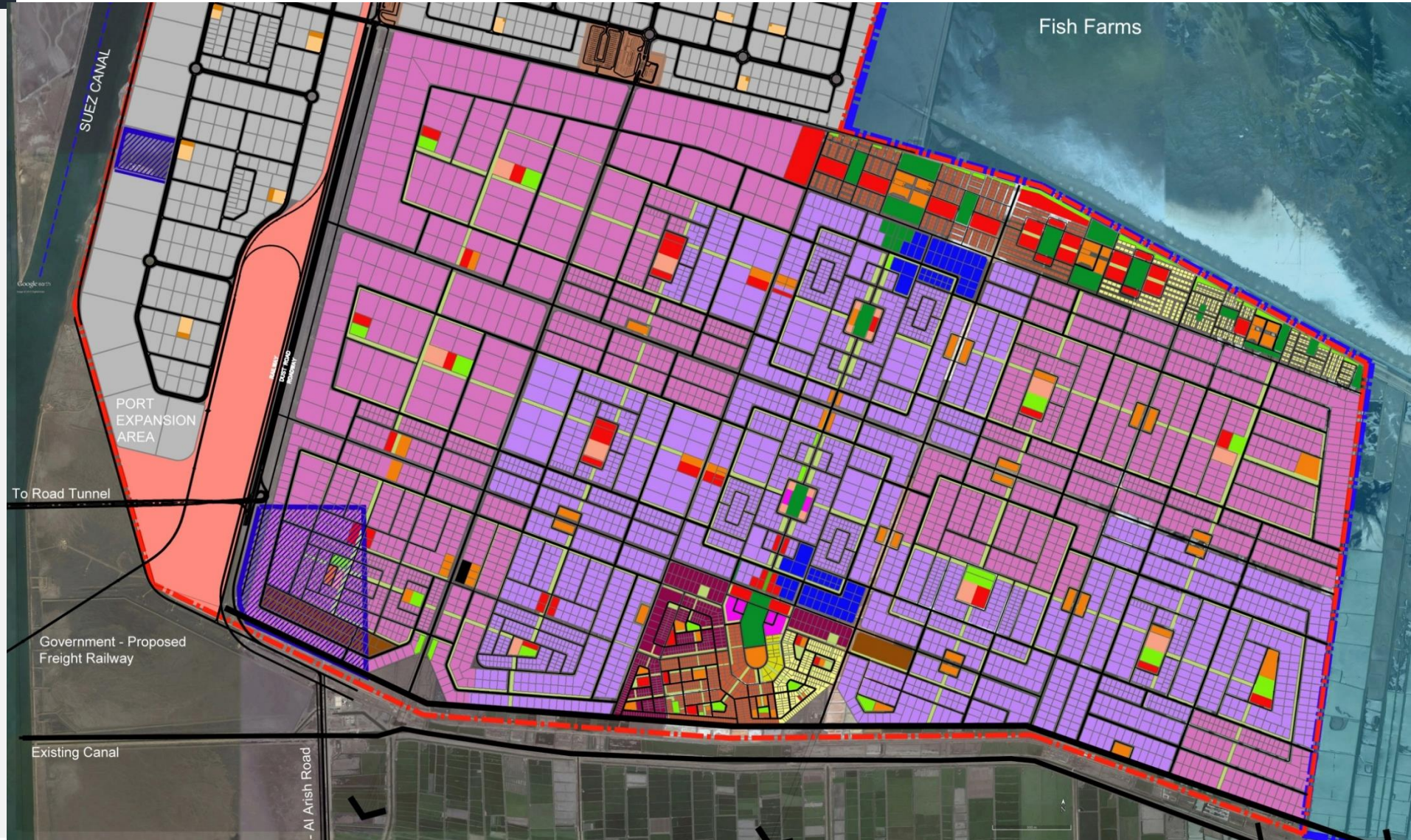
East Port Said – Port Development

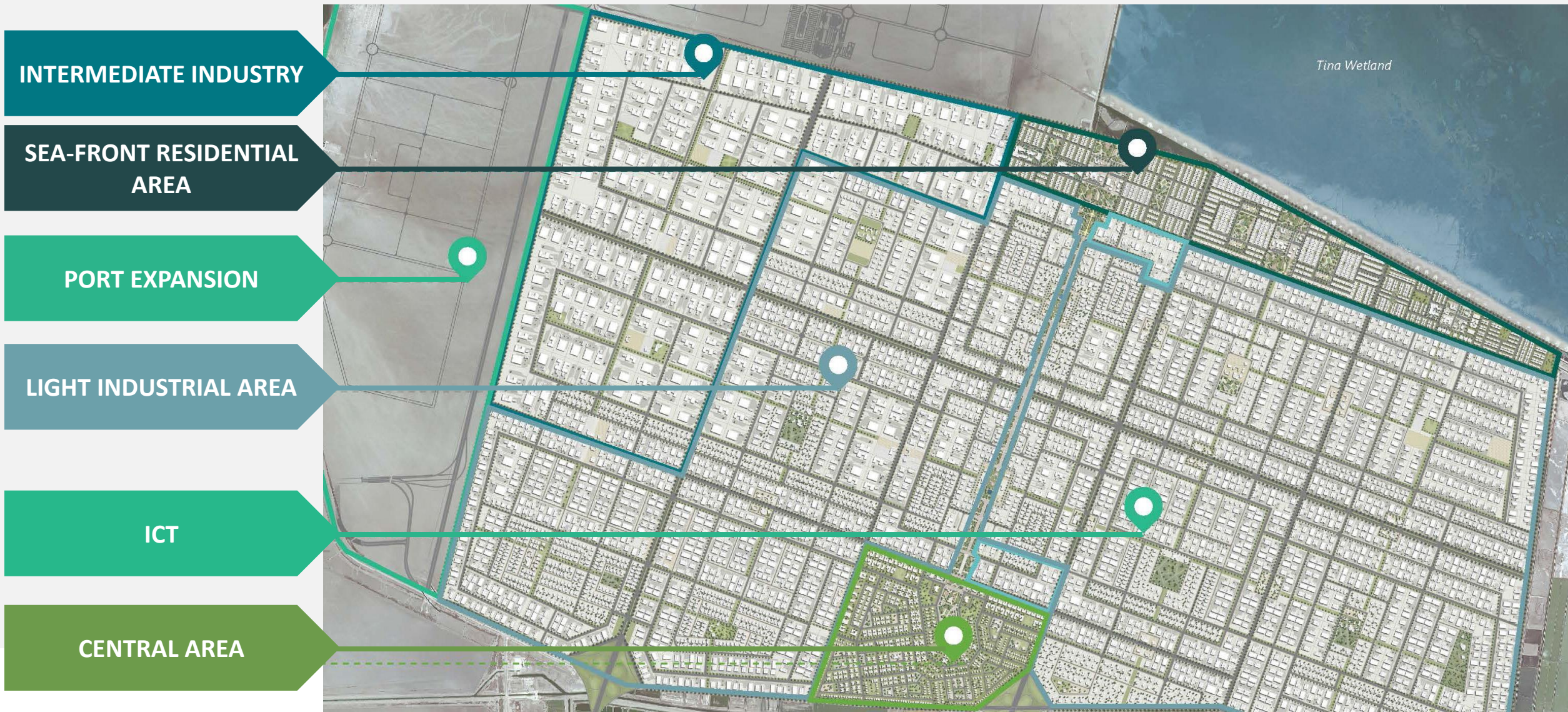
1. Fully integrated container terminals to accommodate an additional 20 million TEUs per annum. Maximum berth length 1500m linear
2. General Cargo/ Dry Bulk/ Car Storage
3. Liquid Bulk
4. Logistics zone

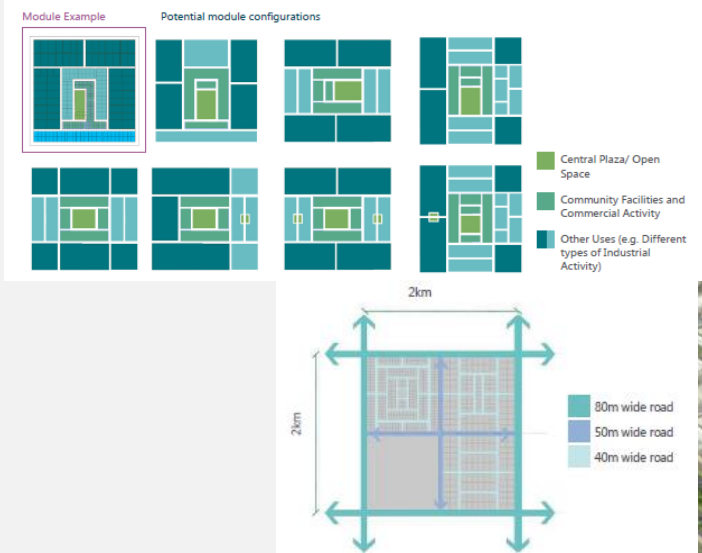


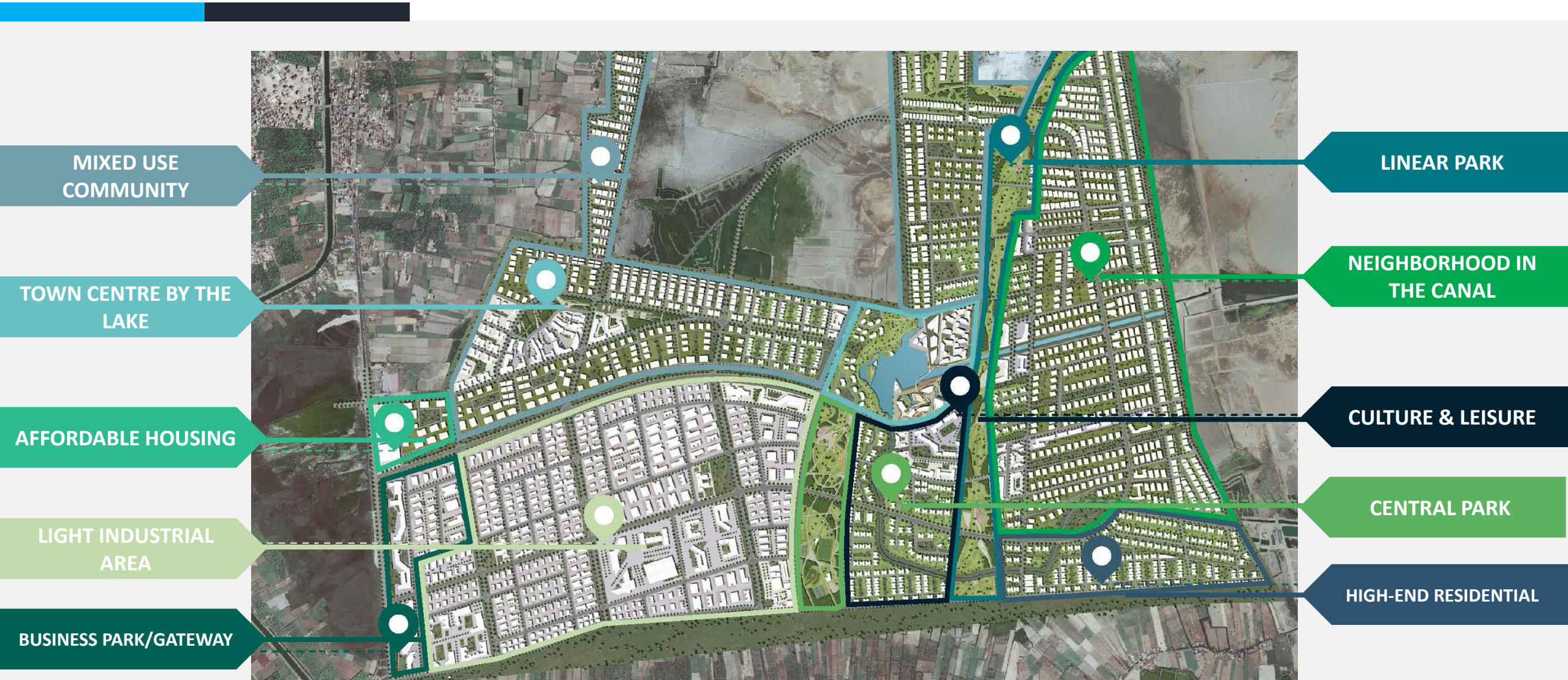
Legend:

-  Shops
-  High density housing
-  Medium density housing
-  Social services
-  Light Industries
-  Medium Industries
-  High Industries
-  Commercial offices









Legend:

- Heavy Industries
- Light Industries
- Medium Industries
- Mixed Uses and Residential
- Central Area
- Touristic Area



Port

- **Container Terminal**
- **RoRo**
- **Bunker**

Logistics

Industry

- **Industrial Developer**
- **Heavy Industry**
- **Medium & Light Industry**
- **Commercial**

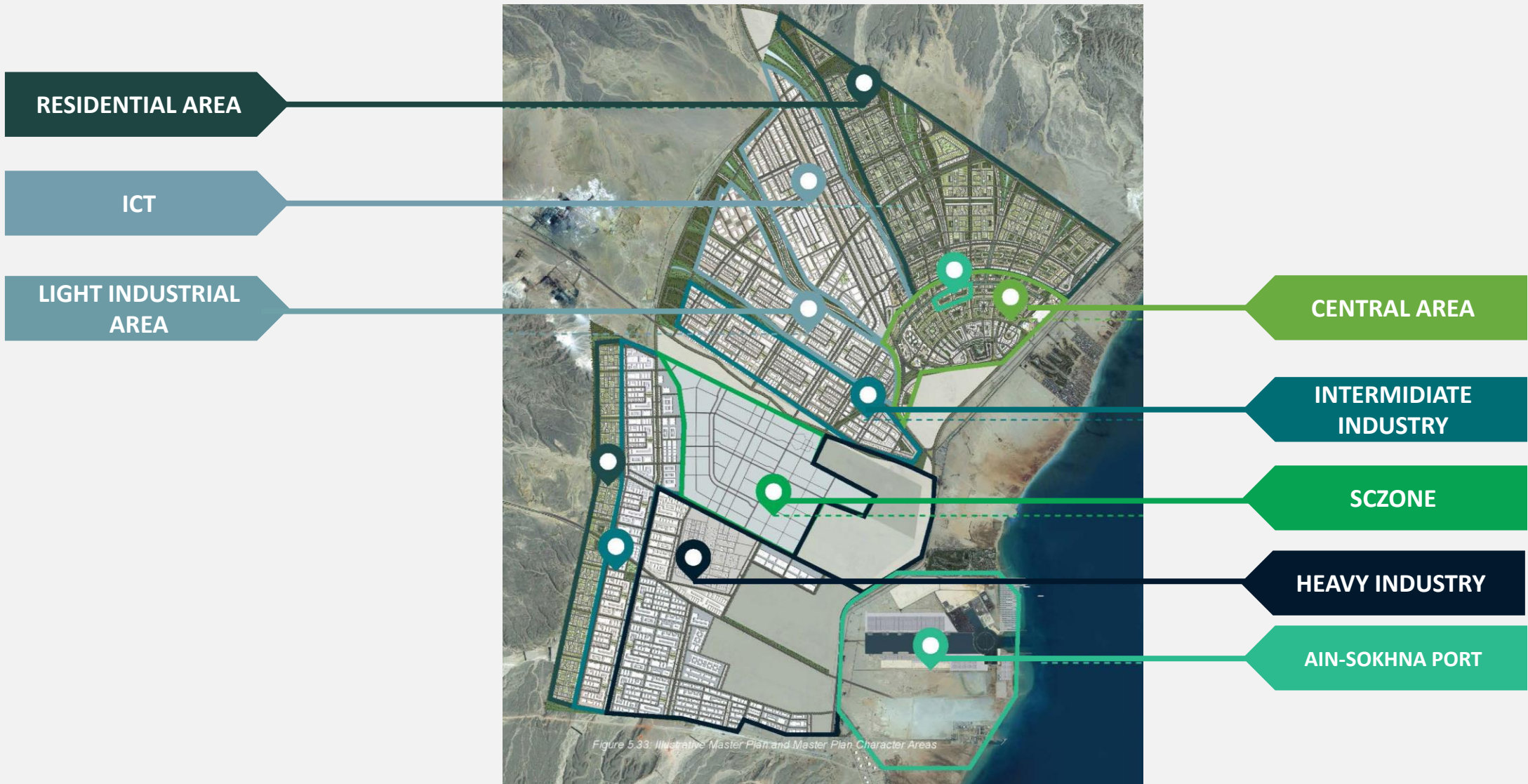


Figure 5.33: Illustrative Master Plan and Master Plan Character Areas

1. Fully integrated container terminals with maximum berth length of 2200m and yard area of 1.4km²
2. General Cargo/ Dry Bulk – maximum of 2200m , annual capacity of 20 million tonnes
3. Liquid Bulk
4. Logistics Area Connected to the industrial zone





Location

Connectivity :

Roads -Rail -Ports -Airports



Ease of doing business

- Land / Office Building
- Registration
- Lic
- Time from port to factory and vice versa
- Labour Laws
- Price and skill of labour



Basic Infrastructure

- Elect /Gas /Water /Water Treatment / Roads / Communications -Goes without saying !
- IT as a service



Incentives

- Corporate Taxes
- Value Added Tax
- Wages Tax
- Tax on Foreigners
- Customs
- Insurance
- Contribution to Pensions
- Training
- Contribution to Establishment

THANK YOU

 darwish@sczone.eg

 www.sczone.eg