



Annual Iraqi - European Business & Investment Forum, 21 April 2016

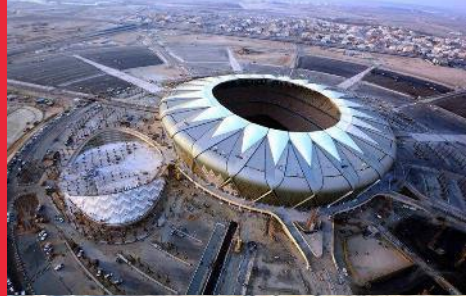
Mr Ghassan Ejeh, Senior Executive Vice President of BESIX, Six Construct



From early pioneer to
long-standing partner



50 years
of dedicated
service to the
Middle-East





Fertilizer Plant

Al Qaim - Iraq



 1981



 Sybetra



Housing Project

Baiji - Iraq



 1981



A turnkey housing project of 390 residential units for the people at the power station.

 Sybetra



Early pioneers as from...



1909

Start as Société Belge des Bétons



1966

1st project in Qatar
Deep water harbour



1975

Start of Six Construct Ltd, with HQ in Sharjah



2004

LMBO



2009

100 years of Expertise BESIX Group



2015

50 years of Success Six Construct



1965

1st Six Construct contract Abu Dhabi Corniche



1968

1st project in Saudi Arabia Port of Damman



1991

1st project in Sharjah Cement factory



1995

Baynunah tower 1 of the tallest buildings in the Arabian gulf



2005

Emirates Palace Abu Dhabi's famous landmark



2010

Burj Khalifa The world's tallest building



40 years in Sharjah

A track record of over 50 years in the Middle-East

Earned through loyal partnerships



1965

1st contract: Corniche in Abu Dhabi



2015

Six Construct celebrating its 50 years in the Gulf Region

Six Construct Ltd: a track record of over 40 years

Earned through loyal partnerships



1975

Start of Six Construct Ltd, with HQ in Sharjah – Picture: Cement factory, first project in Sharjah



2015

40 years of presence in Sharjah ceremony

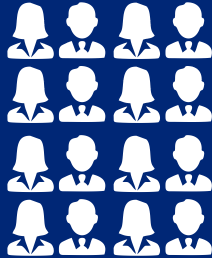
A track record of over 50 years in the Middle-East

Backed by engaged teams



+2,000
in-house engineers
& technicians

have been sharing their
experience between
Brussels & Dubai



+13,000
staff members
at Six Construct

Oman



New port Qaboos of
Mutrah



Sohar Seawater Intake
Pumping Station



Quay Wall Ras
Mussandam



Barka Power &
Desalination Plant



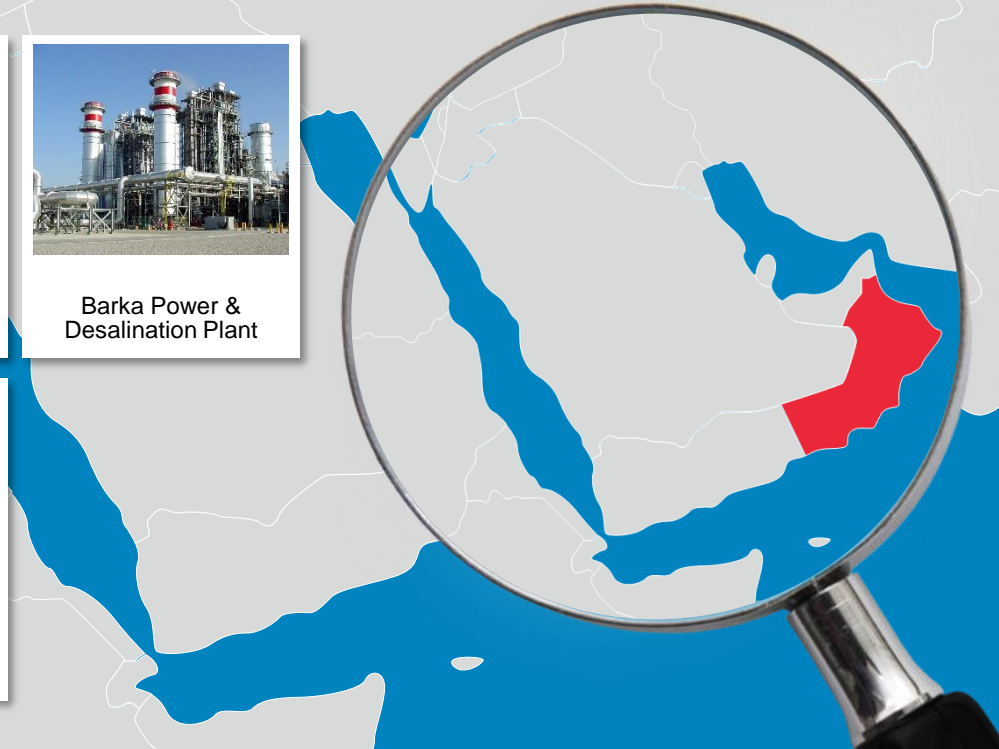
Expansion of port of
Sohar



Road in Khasab
(Musandam)



Sheraton Hotel
(Muscat)



Bahrain



Norh Manama Causeway



Sheikh Zayed Bin Salman Causeway Bridge



Four Seasons Hotel



Leveraging our membership to the BESIX Group

Regional spread and diversity of activities ensure a solid basis and mitigate risk



N°1
in Belgium

N°75
TOP 250
International
Contractors

75%
activities
abroad

+90
years
international
activity

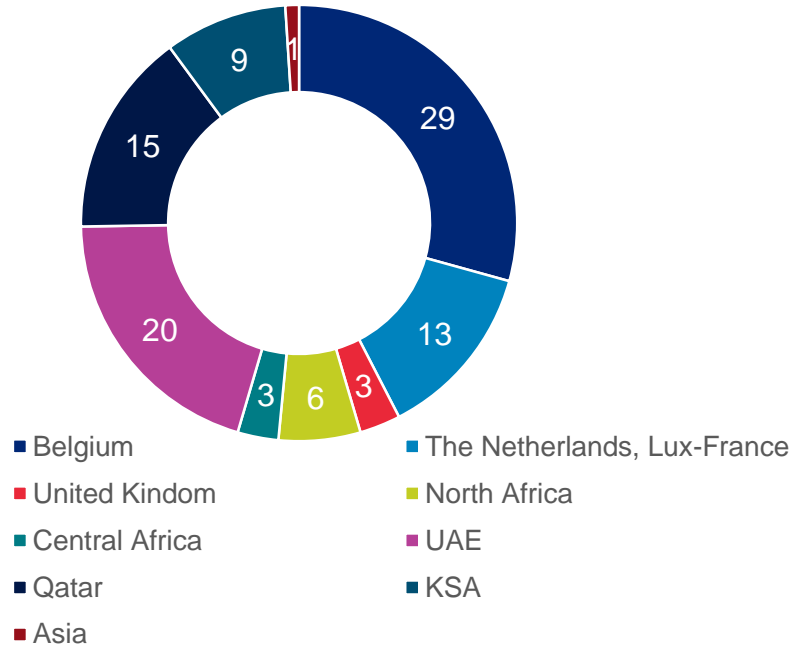
+50
years
experience in
the Middle East



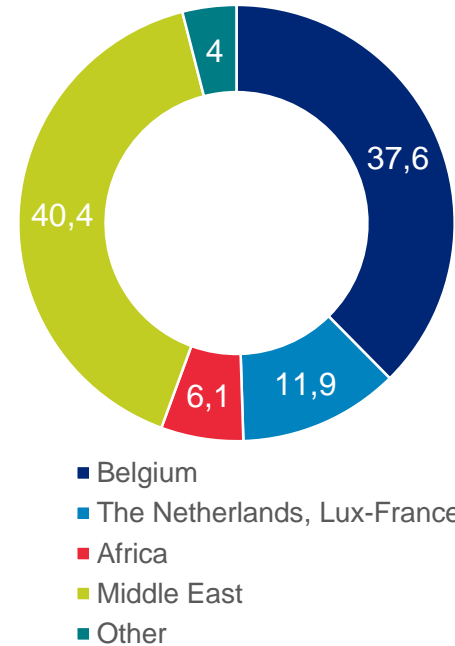
BESIX Group

The Middle East represents 44% of our order book and 40% of our turnover

Order Book by Region (in %)



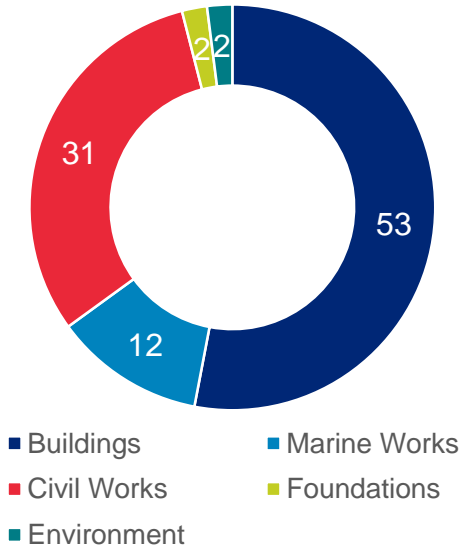
Turnover by Region (in %)



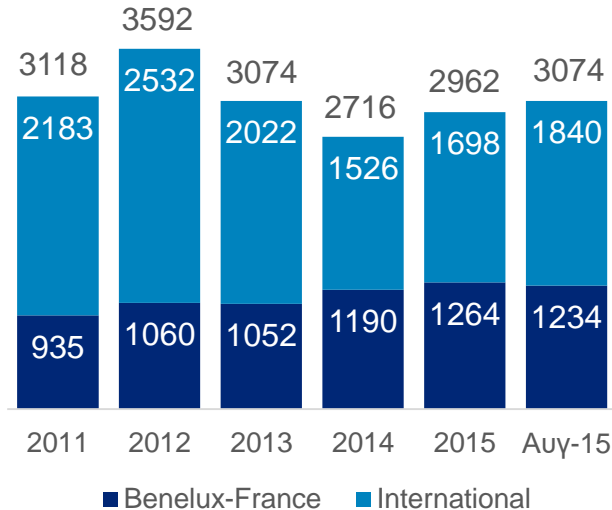
BESIX Group

Evolution Order Book by Sector & Turnover

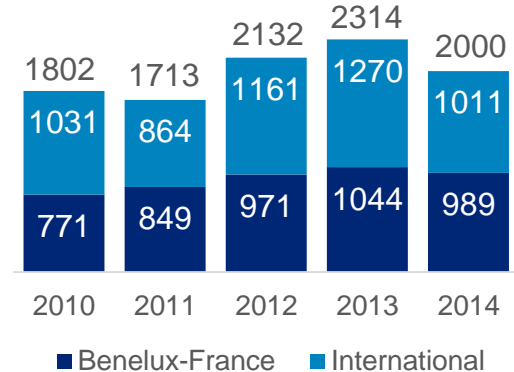
Order Book by Sector
(in %)



Evolution Order Book
(in million Euro)

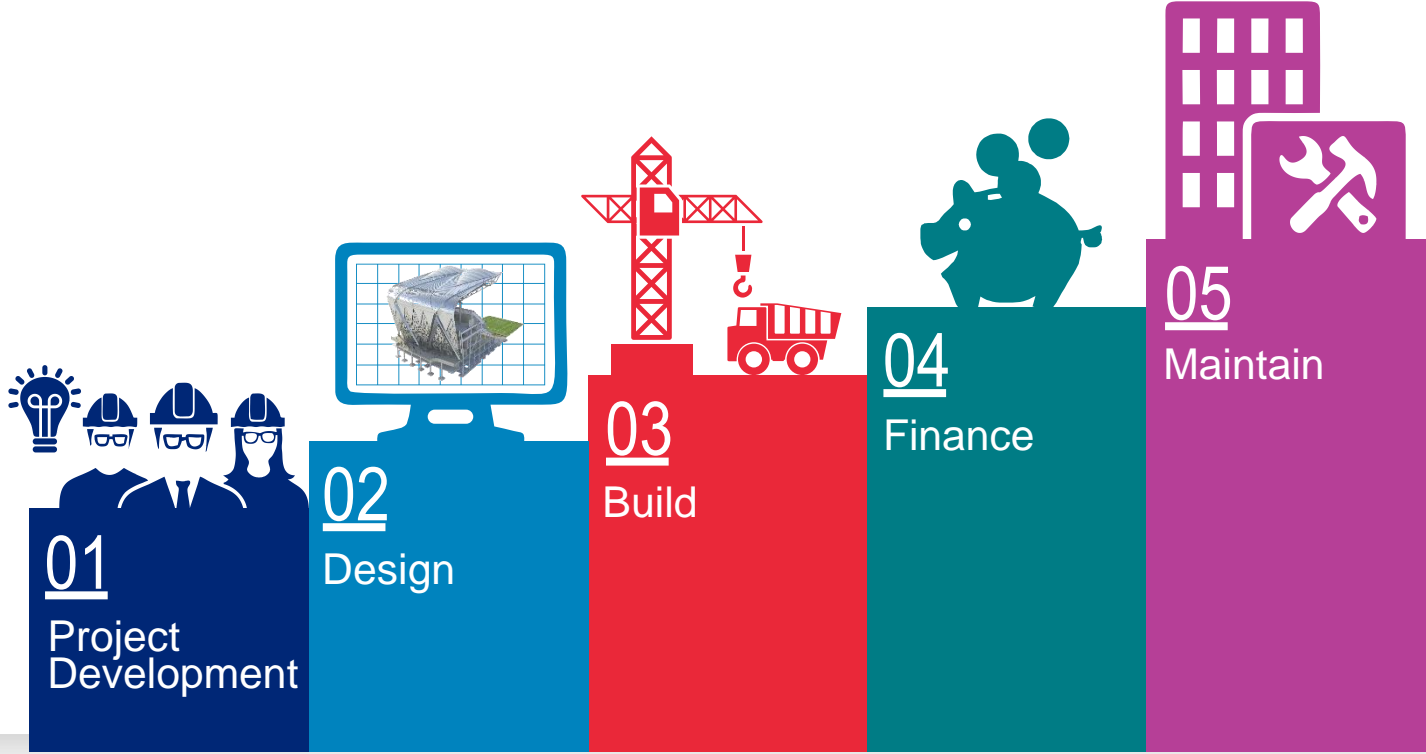


Evolution of Turnover
(in million Euro)



All-in Expertise for a fully integrated approach when needed

Total Project Ownership



Value engineering: on-time execution due to innovative structure

The Qatar Gas Company Ltd, Ras Laffan, 2014



SITUATION

Operational LNG berthing facility in Ras Laffan Port (Qatar) needed urgent repairs due to concrete fissuration caused by Delayed Ettringite Formation. The unreinforced concrete structure showed a high collapse risk.

The occupancy rate of the 12 Ras Laffan berth is above 70%. Closing a berth for repair substantially impacts the gas export capacity of Qatar. Ras Laffan managed to close the berth for 2 months at the most.



Value engineering: on-time execution due to innovative structure

The Qatar Gas Company Ltd, Ras Laffan, 2014

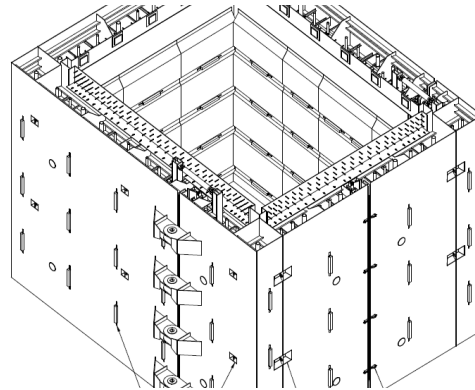


SOLUTION

BESIX built steel boxes outside the activity area, lifting them from the working area and floating them to their final location. Once installed around the structure to support, they are filled with concrete to take over the function of the existing structure.

RESULT

Using this challenging method and thanks to the internal design capacity of BESIX and its ability to incorporate the construction method from day one into the design process. BESIX was able to construct and install the structure within the challenging time frame imposed.



Building Sustainability

Honored for our efforts to minimize our impact



Green
building



Biodiversity



Carbon
footprint



Waste
management



**Cleveland Clinic,
Abu Dhabi**
(LEED Gold)



**Convention center,
Qatar**
(LEED Gold)



**Yas mall,
Abu Dhabi**
(Estidama)



**ADNOC
Headquarters,
Abu Dhabi**
(LEED Gold)



**CSR Label
Dubai**



BUILDINGS



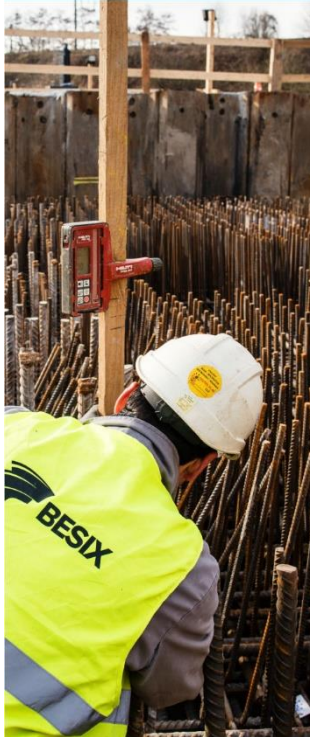
MARINE WORKS



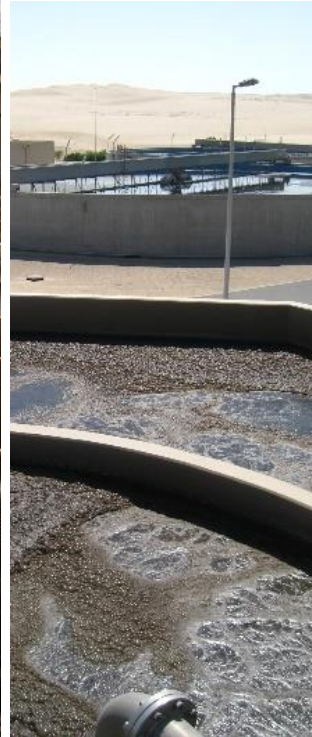
INFRASTRUCTURE



INDUSTRY



ENVIRONMENT



SPORTS & LEISURE





INFRASTRUCTURE

Al Maqta Bridge

Abu Dhabi - United Arab Emirates



1997 - 1999



Construction of a new bridge linking Abu Dhabi island to the main land.

The 426m long bridge consists of a steel box superstructure with a tied arch span of 91.4m and two anchors spans.

The bridge is 19m to 22m wide.



Abu Dhabi Municipality and Town Planning Department



Business Bay Crossing

Abu Dhabi - United Arab Emirates



2005 - 2007



The project consist of 2 main bridges of 480 m long each over the Dubai Creek and involving 5 traffic lanes in each direction.

It also consist an access ramp at the south side as well as the extension of bridges over Dubai Festival City and road 206 all the way to Al Rabat Road.



Abu Dhabi Municipality and Roads Department




Sheikh Zayed Bridge

Abu Dhabi - United Arab Emirates



 2010 - 2011

 100%

 Construction of a 912 m long bridge with 2 x 4 lanes, linking Abu Dhabi with the mainland with a central span of 234 m.

The main bridge is a hybrid structure consisting of central steel asymmetric arch ribs supporting prestressed concrete box girder decks.

 Abu Dhabi Municipality

 Zaha Hadid Architects




Al Garhoud Bridge

Dubai - United Arab Emirates



 2006 - 2009

 100%

 Construction of 2 independent Bridge Decks with 7 lanes in each Direction.

The total length of each Bridge is 520 meters with 7 Spans and a width of 35 meters.

The Bridge will also provide a marine navigation channel of 16 meters high.

 Government of Dubai



Palm Gateway Bridge

Dubai - United Arab Emirates



2003 - 2004



100%



The project includes the construction of the Gateway Bridge which is the main access route to the Palm Island complex.

The Gateway Bridge is a system of 2 bridges providing access to and exit from Palm Island.

Length of the bridges: 350 m each, maximum span 60 m.



Nakheel




Al Sufouh Transit System

Dubai - United Arab Emirates



 2008 - 2014



 A full free interchange along Sufouh road which provides access from/to Pearl Development and the Palm Island to/from north bound / south bound Al Sufouh road.

The project also includes **18 bridges**, the construction of roadway signage and pavement marking, landscaping, street lighting, irrigation ducts, diversion and protection of services such as DEWA-ED, DEWA Water, Etisalat, storm drainage and irrigation systems.

 Roads & Transport Authority





INDUSTRY

National Cement Factory

Sharjah – United Arab Emirates



1974 - 1976



Turn-key and fully operational Cement Factory having a capacity of 220,000 tons/year



H.H. the Ruler of Sharjah Sharjah Cement & Industry



Fujairah Cement Factory

Fujairah - United Arab Emirates



2005 - 2007



50%



The construction of a Greenfield Cement Plant of a capacity of 7,500 ton/day



Emirates Cement Company LLC



Desalination Plant

Jebel Ali - United Arab Emirates



2000 - 2002



Onshore Civil Works:
Construction of sea water screening and pumping station, switchgear building for pumping station, foundation for desalination units and auxiliaries, switchgear building for desalination plant, roads and landscaping work, etc.

Offshore Civil Works:
Installation of sea water intake pipes, intake riser, oil boom, navigation light and outfall structure.



Dubai Electricity and Water Authority



Power & Desalination Plant

Mirfa - United Arab Emirates



1993 - 1995



The project comprises the following elements:

Sea water pumping, production of electricity, distillate water production, steam production.



Water and Electricity Department



Power & Desalination Plant

Taweelah - United Arab Emirates



1992 - 1996



50%



Steam turbines with a capacity of 732 MW and 6 desalination units totaling 76 million gallons per day.



Water and Electricity Department



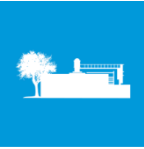


ENVIRONMENT




Abu Dhabi Sewage Projects

Al Wathba & Allahamah - United Arab Emirates



 2008 - 2011

 54%

 Engineering, procurement and construction of 2 sewage treatment plants.

The scope of works consists of the civil works associated with two sewage treatment plants:

- Wathba (Abu Dhabi): 300,000 m³/day capacity;
- Allahamah (Al Ain): 130,000 m³/day capacity.

 Al Wathba Veolia Besix Waste Water Company



Sewerage System Treatment Plant & Piping Network

Ajman - United Arab Emirates



2003 - 2007



BOT contract for a sewerage system and a waste water treatment plant of 48,000 m³/day to serve 380,000 habitants.

BESIX builds and operates both the sewer system and the wastewater treatment plant and reuse of treated water for irrigation, while generating gas produced by the primary effluent treatment.



Ajman Sewerage (Private) Company Limited




Sewage Treatment Works Phase VII

Sharjah - United Arab Emirates



 2006 - 2008



 EPC contract that comprises the detailed design for Mechanical & Electrical works and Construction of Sharjah Sewage Treatment Works Phase 7 consisting of civil works (reinforced concrete structures, pipeline above and below ground, site roads etc.), mechanical plant, electrical & control works

 Sharjah Municipality





Ready to seize your next challenge

www.besix.com