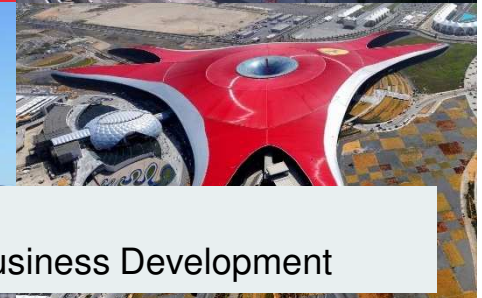




Creating **Value** beyond the **Build**



over
100 years
of reliable solutions
for long-term success



Philippe DESSOY
General Manager Business Development

Excel in creating
sustainable solutions
for better world



As BESIX Group we develop multiple services **to create value for our clients**, whilst incorporating the evolving expectations of the end users and building on **strong partnership** with all stakeholders

- 1 Leveraging on our **customer centricity**
- 2 Developing a « **one-stop-shop** » solution
- 3 Being a leader in open innovation
- 4 Promoting **openness towards** new ventures & activities for business
- 5 Promotion a **great place to work**
- 6 Synergizing **our ways of working**



N°1
in Belgium



N°61
TOP 250
International
Contractors



65%
activities abroad



25 countries
80 Nationalities



+95 years
international activity



+55 years
experience
in the Middle East



**Privately
Owned**
50% MIC with casting vote
50% OC



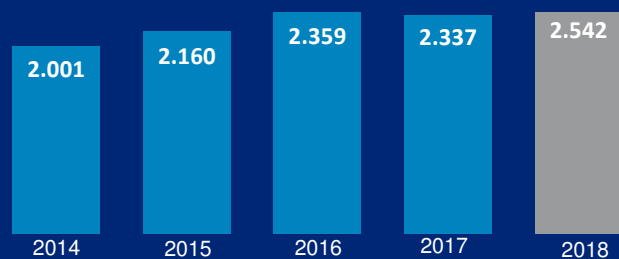
+4,500
white collars



+10,000
blue collars

GROUP REVENUES

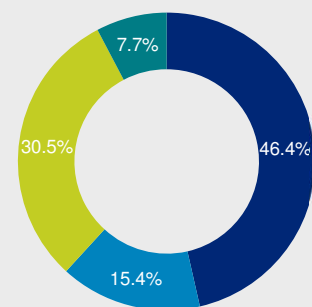
BESIX Group Figures 2014-2018 (in mio EUR)



From
which
+ EUR
1,2 billion
in
Belgium

REVENUES 2018

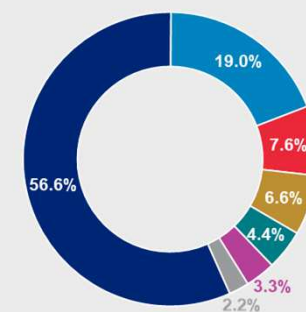
Breakdown by region



- Belgium
- NL - FR - LUX
- Middle East
- Rest of the World

REVENUES 2018

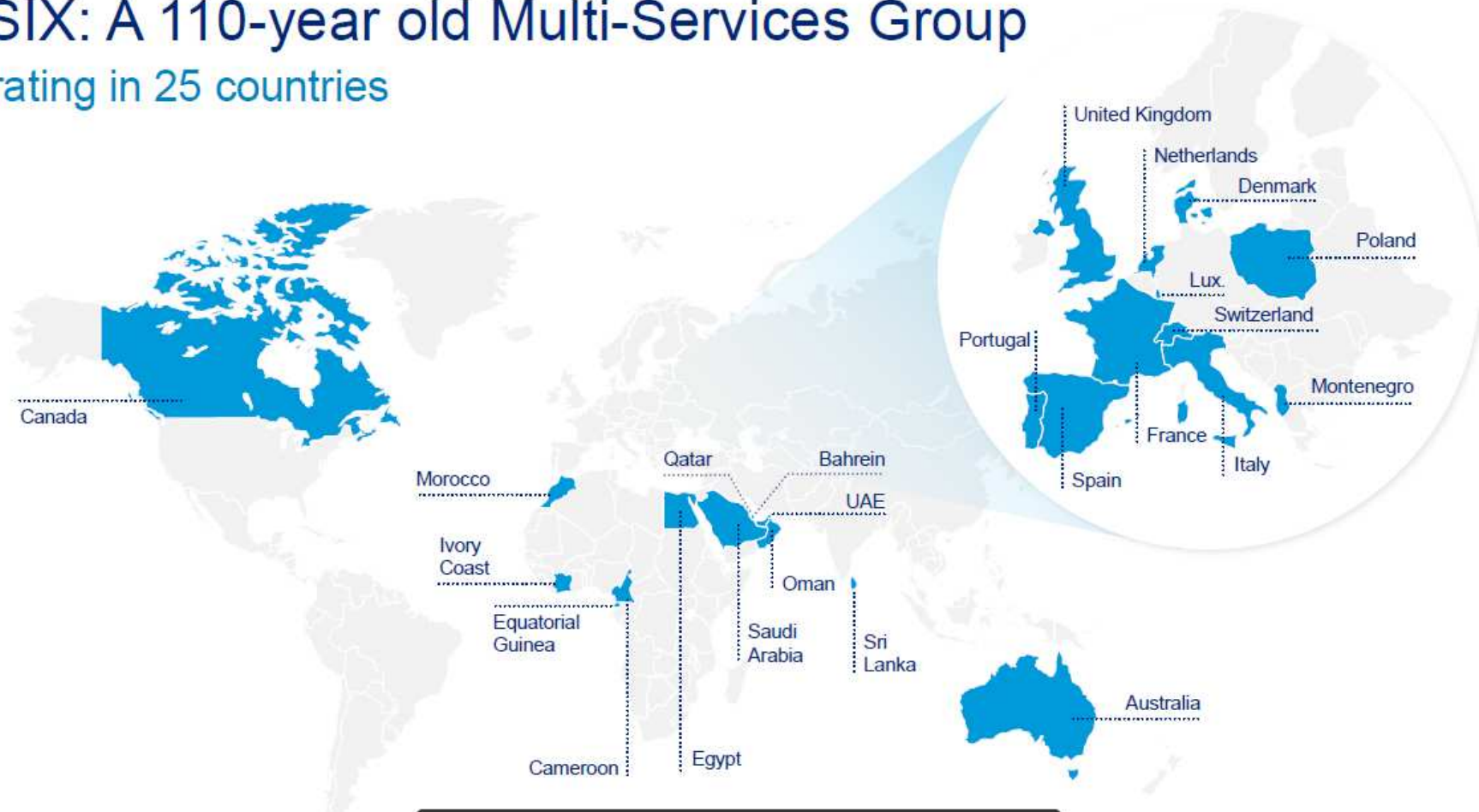
Breakdown by activity



- Building works
- Civil works
- Marine works
- Foundations
- Environmental works
- Other (mainly cables)
- Quarries/Concrete

BESIX: A 110-year old Multi-Services Group

Operating in 25 countries



A strategy of diversification

Our large activity scope reinforces our service offerings and mitigates risk

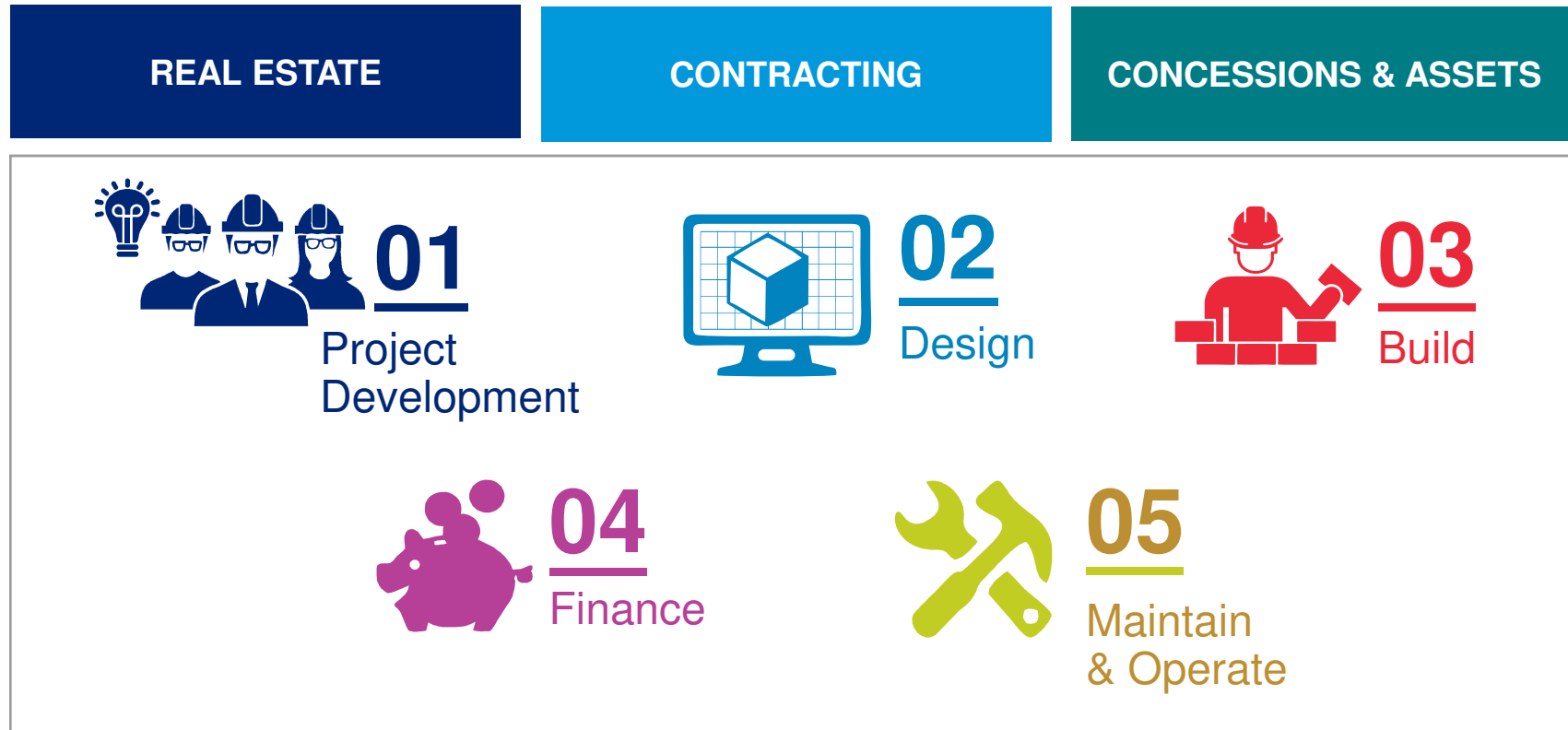


Domain of Expertise

Contracting Activities

Building Project	Leisure Projects	Infrastructure Projects	Water & Environment	Industrial Projects	Marine Works
<ul style="list-style-type: none">• High-rise buildings, Airports, Hotels, Hospitals• Offices, Commercial Centers, Housing schemes	<ul style="list-style-type: none">• Sport Facilities• Theme Parks	<ul style="list-style-type: none">• Roads and motorways, railways, tunnels, subways• Bridges, dams, high speed train lines	<ul style="list-style-type: none">• Water Treatment plants & networks, incineration plants, Compost installations• Water intakes	<ul style="list-style-type: none">• Power plants, refineries, petrochemical plants• Pharmaceutical Facilities, cement factories	<ul style="list-style-type: none">• Jetties, Harbors, Waterway improvements• Coastal protection, Quay walls, Breakwaters, LNG terminals

Expertise along the whole value chain



Ground-breaking records

We take pride in pioneering



Innovation

First to pump concrete

up to
585m



Timing

60,000-capacity stadium

delivered in
26 months

instead of 40 months



Integration

First tram system in the Gulf region

4,000,000
passengers
per year



Partnership

First PPP project in the region: wastewater system

400,000
citizens

Engineering

Enabling flawless execution on-site through a state-of-the art design



**Fully
integrated**
in BESIX Group
Activities

Strong focus on
**Constructability
& Value
engineering**
(best quality-price
balance)

**Close
integration**
between Design,
Methods & Planning
Department and
Construction Site

Dedicated
Engineering offices
**in Dubai &
Brussels,**
working closely
together

**Domains
of expertise**

Safety: always on our mind



SAFETY AWARENESS
is a Key performance
indicator

- The **Toolbox** meeting
- **Life Saving** Rules
- **Safety** Time Out
- **High Standard** Procedures

Our **10**
Life Saving
Rules



Constructing the World's Highest Tower

Duration: **59 months**
(01/02/2005 - 30/12/2009)
on average one floor per 5/6 days

RN1

Height **828 meter**
165 floors

Dismantling last crane & spire
lifting: technical '**tour de force**'

All tubes and joints flexible
because of **sway**

Windtunnel tests (exposed to winds of
200 km per hour/hurricane speed)

Vertical transportation: tower cranes -
construction lift - jump lifts

Coordination of **4000 workers on site**
and about 30 subcontractors

Διαφάνεια 12

RN1

to put - more than 1 billion

Radulovic, Nadja; 6/6/2019

EXPERIENCE in High Rise Buildings



Aspire
Doha
318m
2006



Tornado
Doha
200m
2008



Address Hotel
Dubai
306m
2008



Maastoren
Rotterdam
164m
2009



New Orleans
Rotterdam
158m
2010



Sofaz
Bakou
140m
2014



Four Seasons
Bahrein
202m
2015



Adnoc HQ
Abu Dhabi
342m
2016

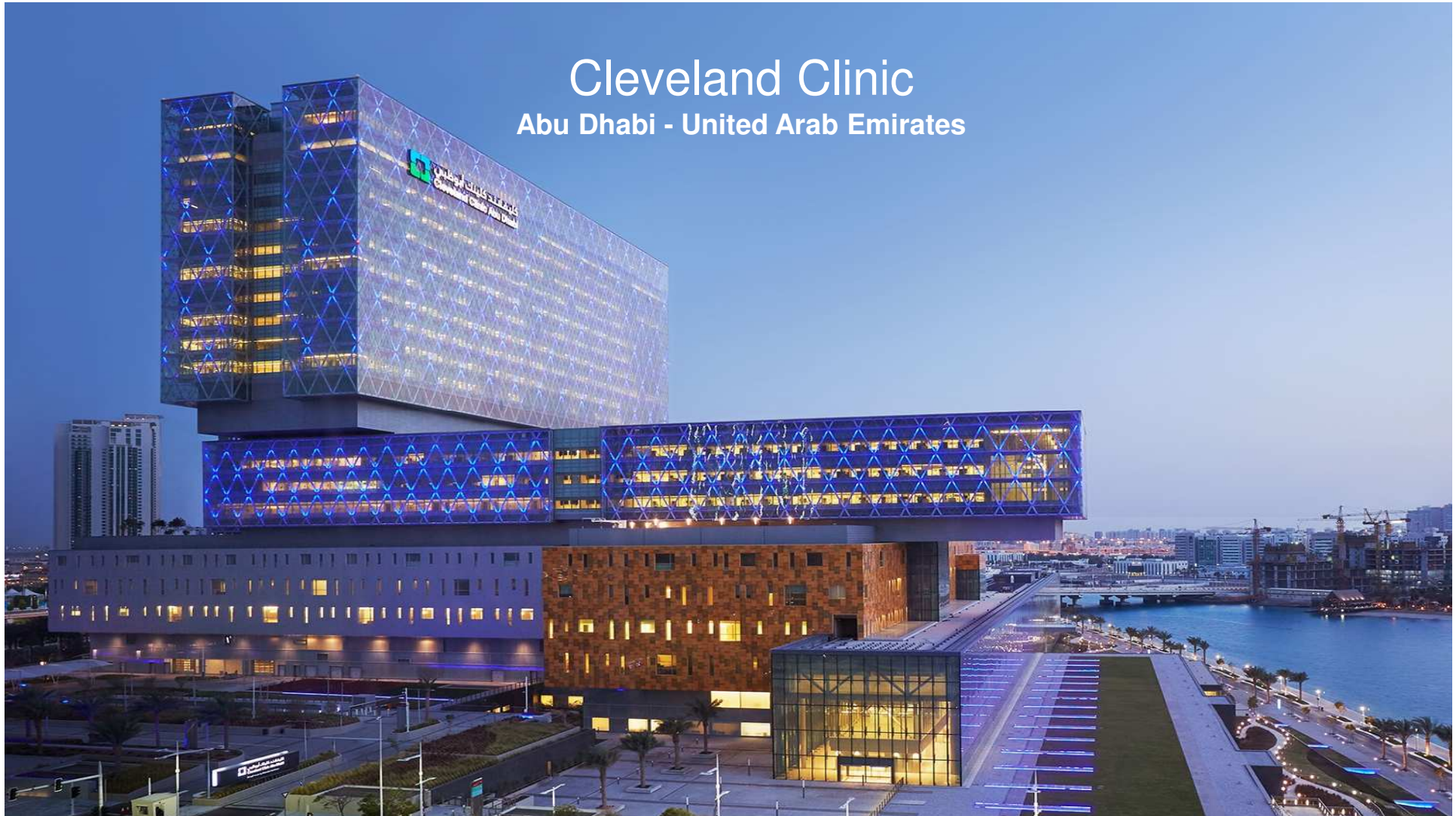
Royal Atlantis

The Palm, Dubai, United Arab Emirates



Cleveland Clinic

Abu Dhabi - United Arab Emirates



Ferrari Experience

Abu Dhabi - United Arab Emirates



Warner Bros Theme Park

Abu Dhabi



Al Wakrah Stadium – World Cup 2022

Doha, Qatar



Roskilde Fjord Link

Roskilde - Denmark



Al Shindagha Crossing

Dubai - UAE



Friday, March 30, 2018



Sheikh Zayed Bridge
Abu Dhabi - United Arab Emirates



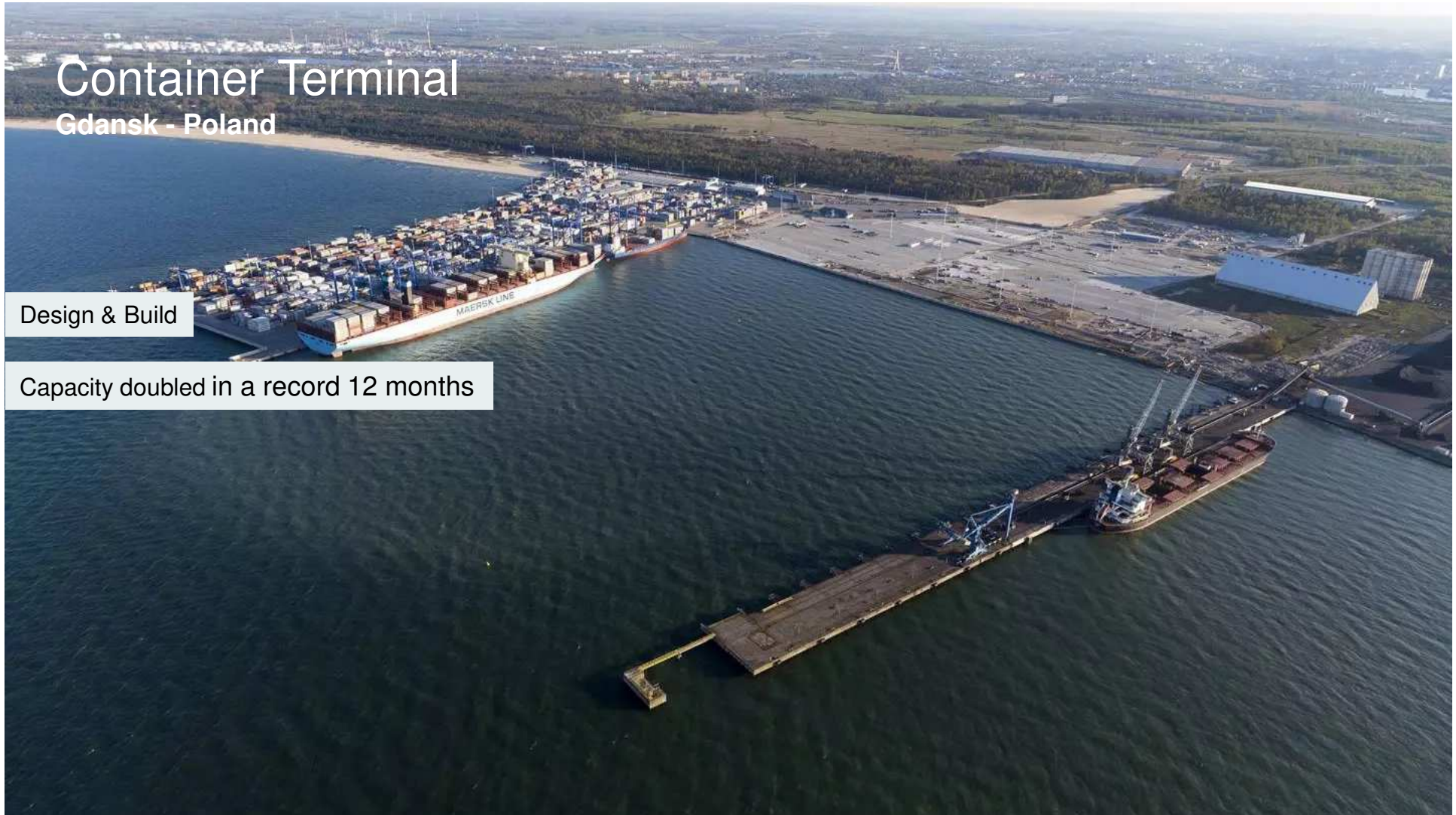
Luštica Bay Marine Village
Luštica - Montenegro

Container Terminal

Gdansk - Poland

Design & Build

Capacity doubled in a record 12 months



Tanger Med II

Morocco (2014)

Design & Build

In JV with Somagec

Huge capacity

9 mio containers, 7 mio passengers, 700,000 vehicles for export

Annual capacity of **over 8 million containers**

New berthing structures (Terminal 4) of the extension of the Tangiers Mediterranean Harbour.

Excel in creating sustainable solutions

Jetty for WAFA Coastal Plant

West of Tripoli, LYBIA



Wafa - Jetty - 09/05/2004

Port of Duqm

Duqm - Oman



Excel in creating sustainable solutions for a better world



Port of Duqm

Duqm - Oman



Ain Sokhna Product Hub

Gulf of Suez - Egypt



3 km F-shaped jetty

2 km long jetty 'ready to berth a ship' in only 5.5 months

Excel in creating sustainable solutions for a better world



Ain Sokhna Product Hub
Gulf of Suez - Egypt

Bahrain LNG Import Terminal

Muharraq Island, Bahrain



2015 - 2018



Six Construct



Bahrain LNG Import Terminal scope of works includes the Design and Construction of an LNG Jetty constructed on drilled and grouted pin piles with a maximum length of 55m, located 5 km offshore (with seabed level at -18m) as well as a 600m long rubble mound offshore breakwater with concrete armor units, type Accropodes II.



Termco



Design and Build



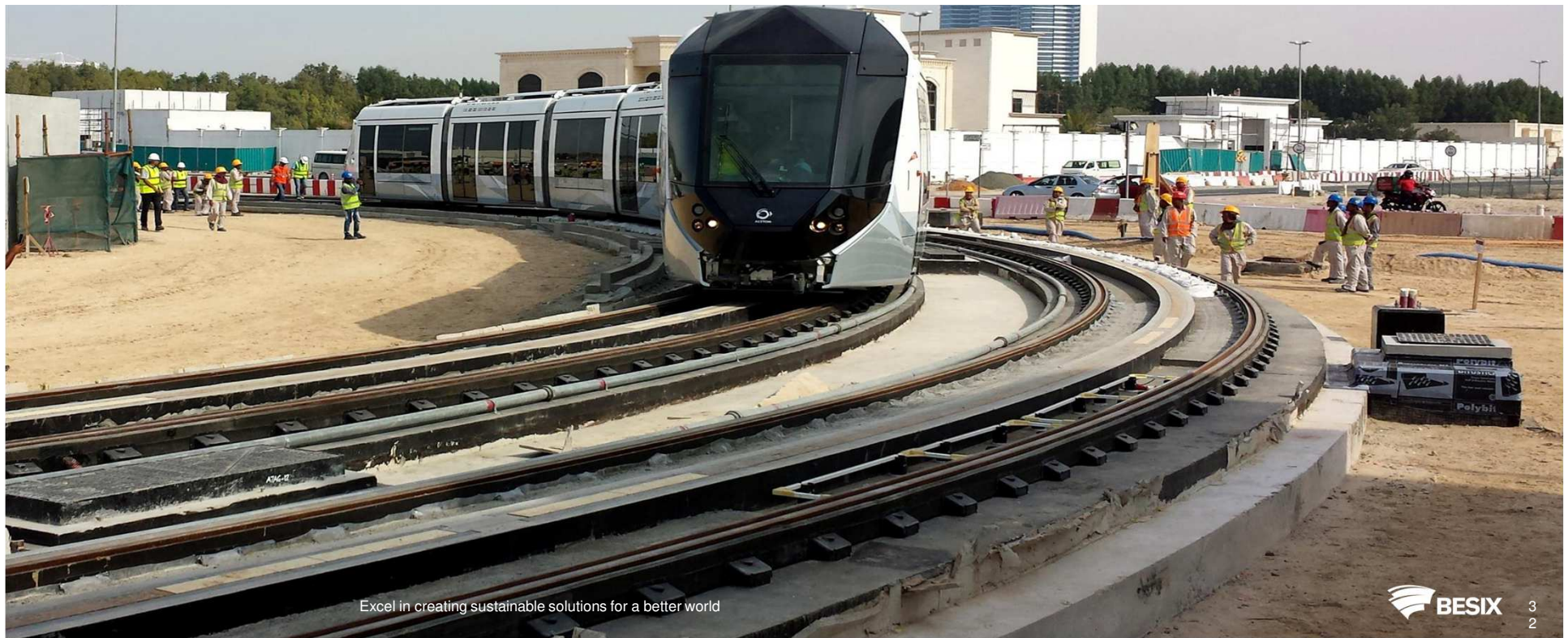
Dubai Water Canal

Dubai - United Arab Emirates



Al Saffoo Tramline

Dubai - UAE



Excel in creating sustainable solutions for a better world

Jebel Ali Wastewater Treatment Plant

Dubai– United Arab Emriates



Sea Water Desalination Plant - Hamma, Algiers



Grand Egyptian Museum

Cairo - Egypt



Grand Egyptian Museum

Cairo - Egypt





Projects in Iraq

BAIJI HOUSING SCHEME

Iraq



1980 - 1983



18,815,000 euro



CONSTR. OF 330 HOUSES, A BACHELOR BLDG., A FAMILY BLDG., A CLUB, A KINDERGARTEN AND A PRIMARY SCHOOL.

Total floor area : 40,000 m²



Iraqi State Organization



Monday, July 15, 2019

Al Qaim FERTILIZER COMPLEX

Iraq - Alkaim



1976 – 1982



145,880,000 euro



FERTILIZER COMPLEX WITH A PRODUCTION
CAPACITY OF 1,100,000 T/Y



Iraqi State Organization for Minerals



Monday, July 15, 2019

AKASHAT PHOSPHATE MINE COMPLEX

Iraq - Akashat



1976 - 1979



32,436,000 euro



Annual Production capacity: 3,400,000 T

CIVIL WORKS FOR A PHOSPHATE MINE,
INCL. CRUSHER HOUSES, TUNNELS, LOADING
TOWER, LABORATORIES, BUILDINGS,
RAILWAYS, AIRFIELD, ROADS, SEWAGE
TREATMENT PLANT



Iraqi State Organization for Minerals



Monday, July 15, 2019



Contact Us



pdessoy@besix.com



+32 470 90 44 17



Gemeenschappenlaan 100 Avenue des Communautés
1200 Brussels



www.besix.com