

The AS logo consists of the letters 'AS' in a bold, white, sans-serif font, centered within an orange parallelogram. The background of the entire slide is a grayscale photograph of a dairy processing plant, showing large stainless steel tanks, pipes, and walkways.

**AS**

**Automation System Hellas**

# **DLBA Dairy Plant Installation Our experience in Erbil Iraq**

**George Petrakis  
Managing Director**

**AS**

**Automation System Hellas**

**Plant Engineering & Automation**

**copyright 2019**

The AS logo consists of the letters 'AS' in a bold, white, sans-serif font, centered within an orange parallelogram. The background of the slide is a grayscale photograph of an industrial facility, showing a long, narrow aisle with metal grating floors, flanked by large industrial tanks and complex piping systems. The perspective is looking down the aisle, creating a sense of depth.

# AS

Automation System Hellas

# AS Company Profile

A small version of the AS logo, featuring the letters 'AS' in white on an orange parallelogram background.

AS

Automation System Hellas

Plant Engineering & Automation

copyright 2019

# AS Hellas – What we do

- We design, develop and install complete automated production lines in liquid food as are milk, mineral water, juices etc.
- We design, develop and install automation in refineries, waste water plants, road tunnels, energy plants etc
- We design, develop and install Building Automation in large complexes as are Airports, Museums, Hotels etc



# Our Journey since 1996

- Founded in 1996, we have over 23 years of presence, having successfully completed more than 400 projects in:

- *Greece*
- *Romania*
- *Turkey*
- *Bulgaria*
- *Albania*
- *Libya*
- *Algeria*
- *Iraq*
- *Ghana*
- *U.S.A.*
- *Canada*
- *Qatar*





# Our Final Customers (Greece)

- *KRI-KRI, OLYMPOS, TYRAS, NEOGAL, FARMA KOUKAKI*
- *VIKOS, FRIESLAND, MEVGAL, ZANAE, LA FARM, BELAS, BIZIOS*
- *ATHENIAN BREWERY, MACEDONIA THRACE BREWERY, AMITA BALLKANIK*
- *METKA, AKTOR, EGNATIA ODOS, DEH, HELPE, EYDAP*



# Our values

- We are proud for our expertise, our devotion to our clients and to the on-time and successful completion of our projects.
- We cooperate with the most reliable and innovative companies in Europe, to offer our clients custom made solutions for their Production needs.
- From small projects up to large complete ready to produce plants, we strive to be the reference point for our value for money to our customers.



# Mission

**«We help our Customers in the fulfillment of their vision, wherever they need us»**



# Certifications and Cooperations

Solution Partner

Automation

**SIEMENS**



Authorized Integrator



PartnerDirect  
Registered



Automation System Hellas

Plant Engineering & Automation

copyright 2019



The AS logo consists of the letters 'AS' in a bold, white, sans-serif font, centered within an orange parallelogram. The background of the entire slide is a grayscale photograph of a dairy processing plant, showing large stainless steel tanks, pipes, and walkways.

**AS**

**Automation System Hellas**

# **DLBA Dairy Plant Installation Our experience in Erbil Iraq**

**George Petrakis  
Managing Director**

**AS**

**Automation System Hellas**

**Plant Engineering & Automation**

**copyright 2019**

# Project Description

- On January of 2015 we were assigned the construction of the Yoghurt and Ayran production plant in Erbil -Iraq.
- The production sections were milk reconstitution, mixture preparation, pasteurization, fermentation, filling and Cleaning In Place.
- Our reference and the visit of our customer in Greece sealed the deal

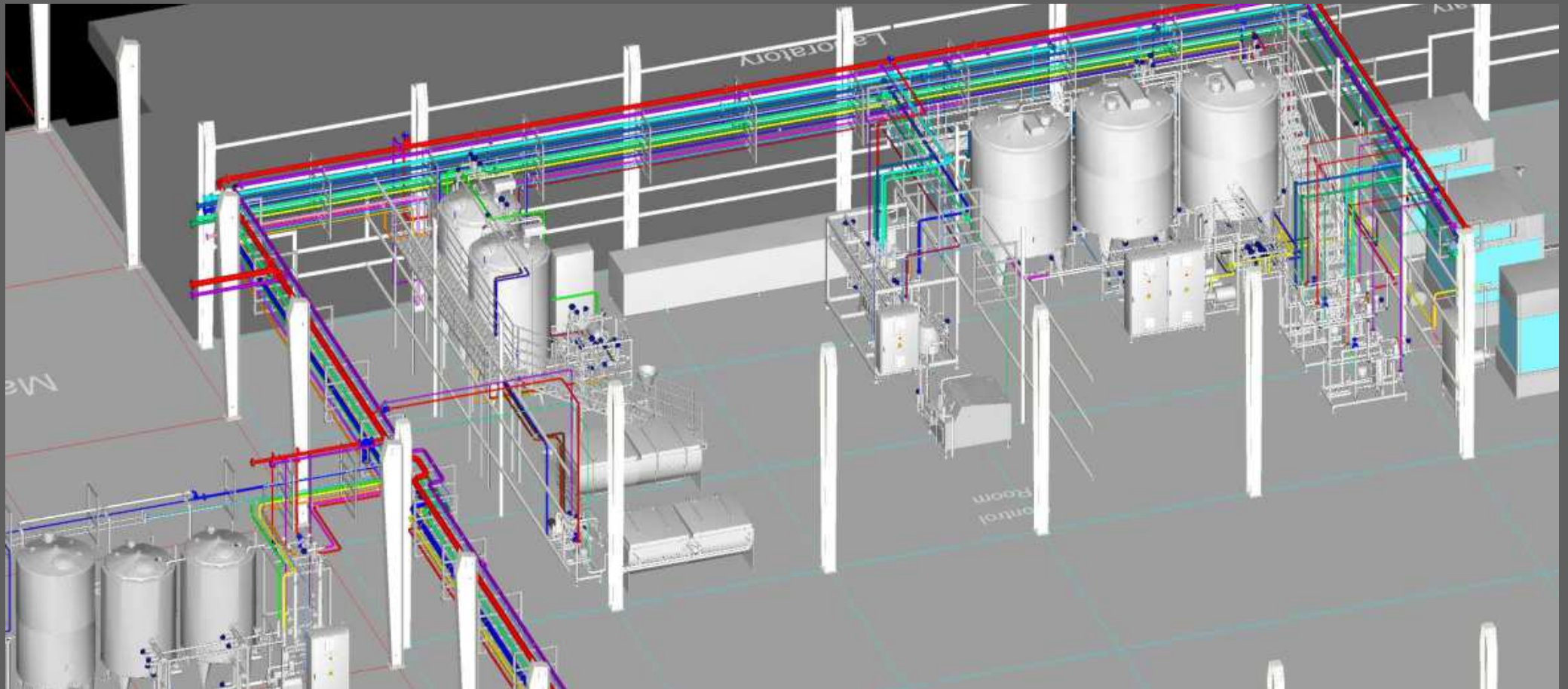
# Difficulties

- Anti ISIS war at the time – Mosul only 80 Km away from Erbil
- There was no production experience by our customer
- Problem to find specialized material or equipment locally.
- Long delays at the boarder at the time.

# Solutions

- We contacted the Greek consulate in Erbil
- Myself and our chief engineer traveled first to check the situation
- We had to foresee everything
- Modular prefabrication of units was the solution
- The whole plant was designed in 3D so as to avoid surprises

# 3D Drawing of the plant





# Loading the trucks





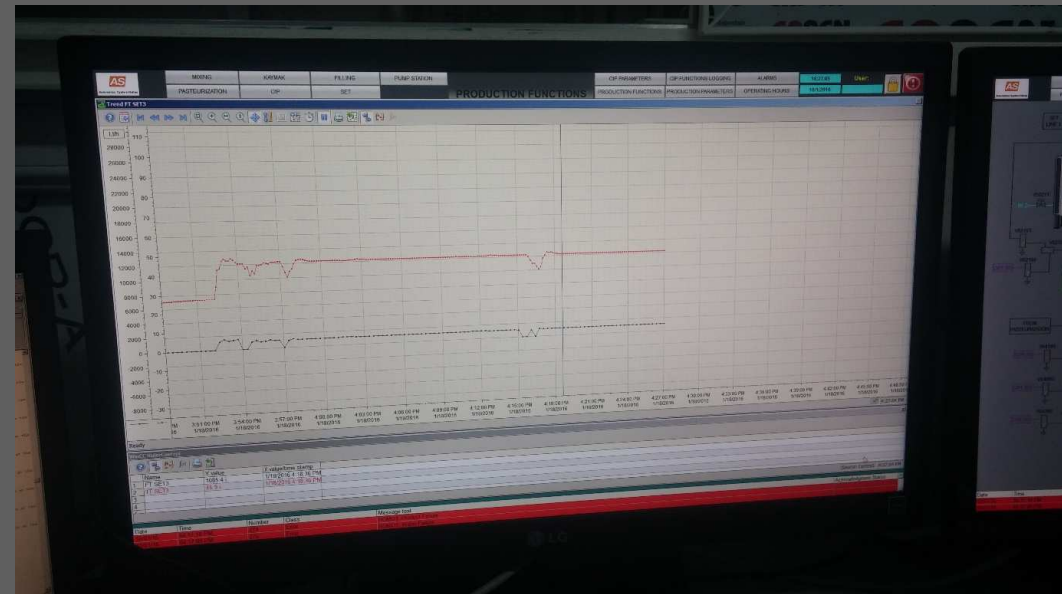
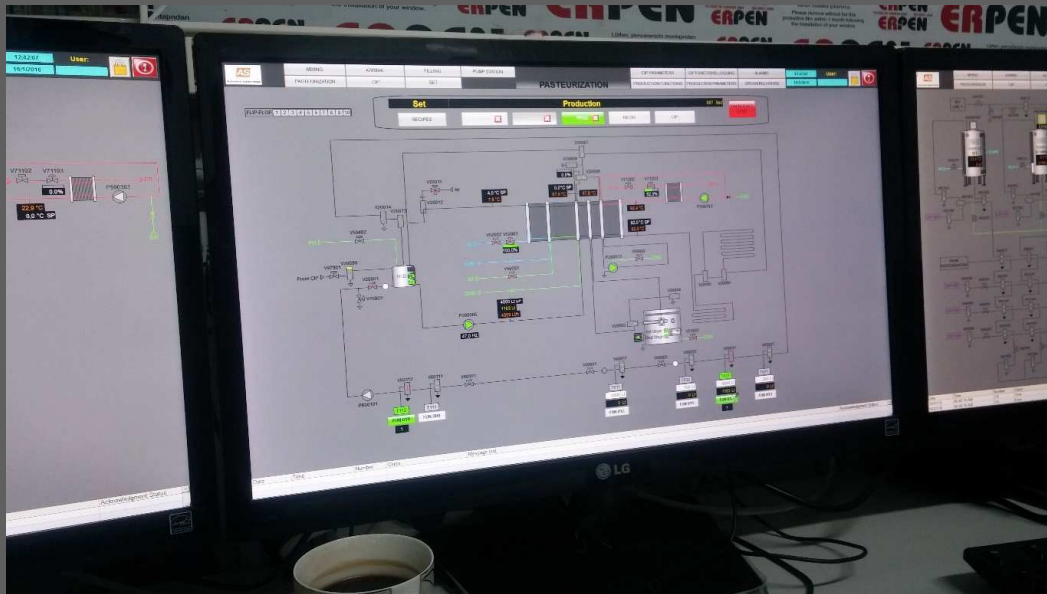
# Units at site!



# Plant ready!



# Automation in Place and Working!



# Our Conclusions

- We found knowledgeable engineers locally
- Very friendly staff and people
- Erbil was developed much more than we expected
- Financial relations very straight forward and our customer very reliable
- We Greeks have a history of good relations with the Arab countries.
- We highly recommend the construction in Iraq (at least in Erbil)



## **Automation System Hellas**

32 Chalkis St, PO Box 60773,  
57001, Thessaloniki, Greece

Tel: +30 2310 475492, 273762, 242213

Fax: +30 2310 253159

E-mail: [info@ashellas.com](mailto:info@ashellas.com)

Website: [www.ashellas.com](http://www.ashellas.com)

