



# 1ST ARAB-HELLENIC MARITIME CONFERENCE

## PORTS OF YEMEN THE FUTURE AND THE CHALLENGES

**CAPT/ BASAM ALSANDI**

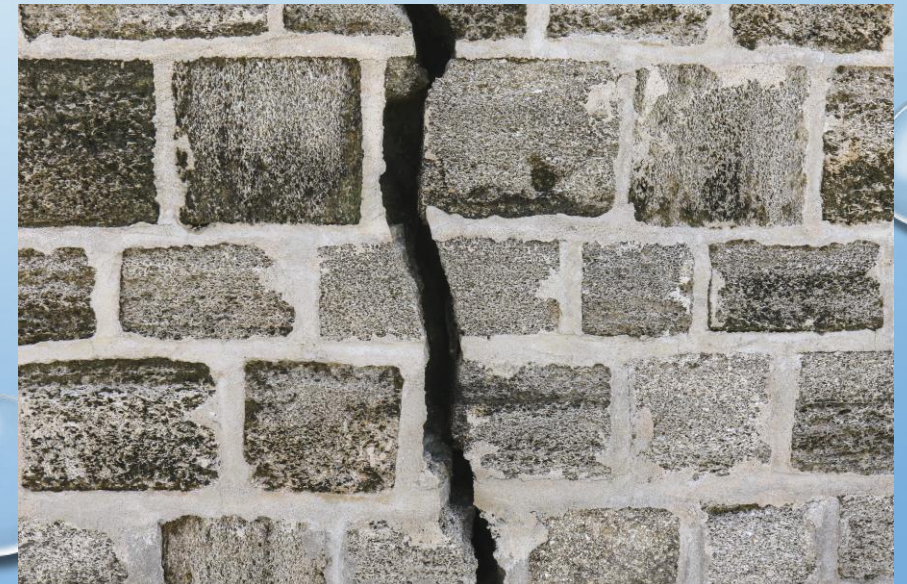
**YEMEN RED SEA PORTS COOPERATION**

**CEO/CHAIRMAN OF BOARD OF DIRECTOR**



# PORTS OF YEMEN

## A ROAD TO RECOVER , BACK TO COURSE AND FUTURE CHALLENGES



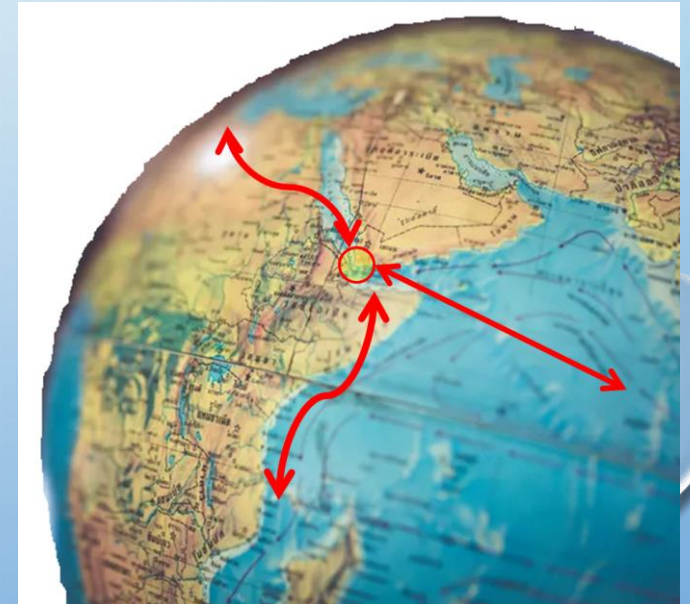
# MOT MARITIME PARTNERS





**PERFECT LOCATION AND A  
LEGACY TO BE PROUD OF**

**PORT OF ADEN FACILITIES  
AND CAPABILITIES**





## 1- MUALLA AND GULF OF ADEN MARINE BERTHS

MUALLA BERTHS PROVIDE SEVEN BERTHS AND LARGE STORAGE AREA. THE BERTHS DEPTH RANGE FROM 6.7-10.7 METERS CAPABLE TO ACCOMMODATE SHIPS CARRYING 42 THOUSAND TONS OF THE BULK CARGOES. THERE ARE ALSO (2) DEEP BERTHS IN THE GULF OF ADEN MARINE COMPANY WHARF, THE SOUTHERN BERTH WITH A DRAFT OF 12 METERS AND THE NORTHERN BERTH WITH A DRAFT OF 14 METERS, WHICH ARE CONSIDERED THE LARGEST BERTH IN YEMEN, WHICH ENABLES IT TO RECEIVE BULK WHEAT SHIPMENTS OF UP TO 75 THOUSAND TONS.



## 2- ADEN CONTAINER TERMINAL



ADEN CONTAINER TERMINAL PROVIDES (2) BERTHS WITH A TOTAL LENGTH OF 700 METERS AND A DRAFT OF 16 METERS. IT IS THE ONLY TERMINAL IN YEMEN SPECIALIZED FOR HANDLING CONTAINERS CAPABLE TO ACCOMMODATE 950,000 TEUS ANNUALLY. IT HAS (6) GANTRY CRANES AND VARIOUS YARD EQUIPMENT. ACT ENJOYS WITH A COMPLETE INDEPENDENCE WITH REGARD TO ELECTRICAL ENERGY, AS IT HAS ITS OWN ELECTRICAL STATION. IT ALSO PROVIDES OFFICES AND LARGE STORAGE SPACES.





### 3- OIL HARBOR BERTHS (ARC):

THE BERTHS OF THE OIL PORT NEAR THE CAMP OF THE ARAB COALITION FORCES PROVIDE (4) PRIVATE BERTHS FOR RECEIVING TANKERS OF CRUDE OIL AND ITS DERIVATIVES, CAPABLE OF RECEIVING SHIPS WITH LENGTHS RANGING BETWEEN 180-280 METERS AND A DRAFT BETWEEN 10-14 METERS. IT ALSO PROVIDES THREE BERTHS THAT CAN RECEIVE DIFFERENT SHIPS WITH A LENGTH OF 150 METERS AND A DRAFT OF 10 METERS. THIS PORT SERVES OIL TANKERS AS IT BELONGS TO THE ADEN REFINERY COMPANY (ARC), WHERE THE REFINERY IS LOCATED, WHICH PROVIDES LARGE AREAS FOR STORAGE, WHETHER FOR OIL/ GAS MATERIALS OR PROJECT GOODS.





VESSELS EN ROUTE SERVICES.  
DRY DOCKING SERVICE.  
GLOBAL OPERATOR.  
BUNKER OIL SUPPLY.  
ECONOMIC FREE ZONE



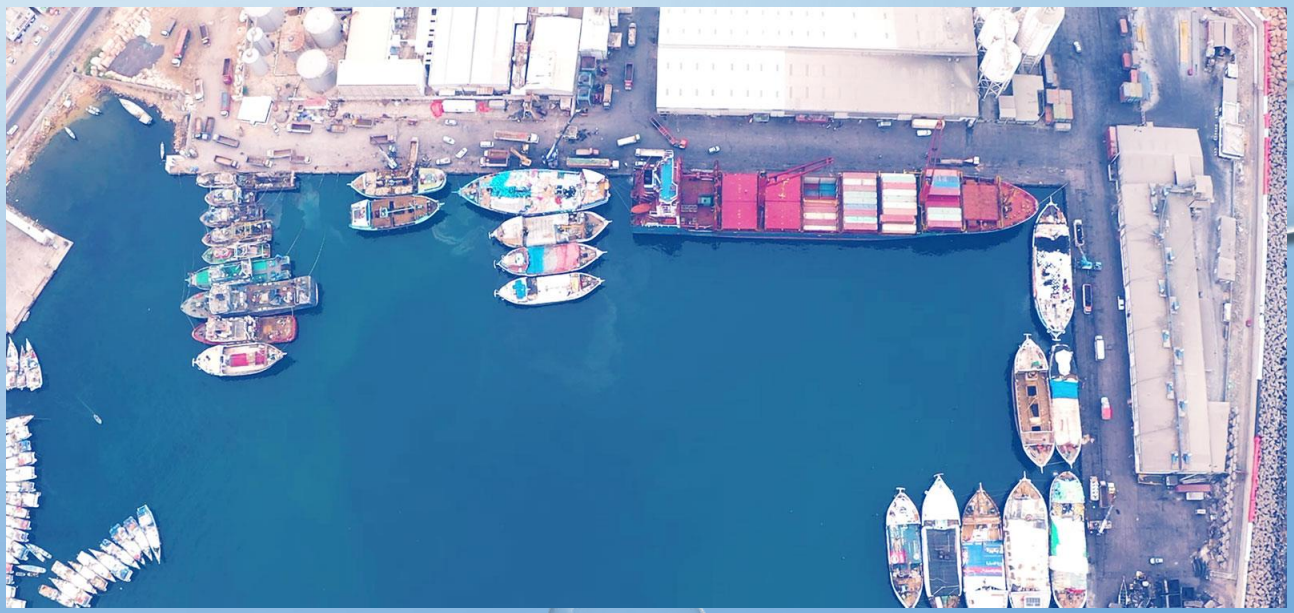




# EXTENSIVE TREAD EXCHANGE ,GEOGRAPHICAL CHALLENGE AND A YEMENI EAST GATE

Yemen Arabian Sea Ports  
Corporation

Seven Visibility studies





THE COASTAL LINE OF THE  
CORPORATION'S GEOGRAPHICAL SCOPE  
IS 1232.6 KM

COVERING GOVERNORATES OF:

AL-MAHRA 339.39 KM

HADRAMAWT 278.04 KM

SHABWA IS 159.86 KM

SOCOTRA ISLAND 455.31 KM

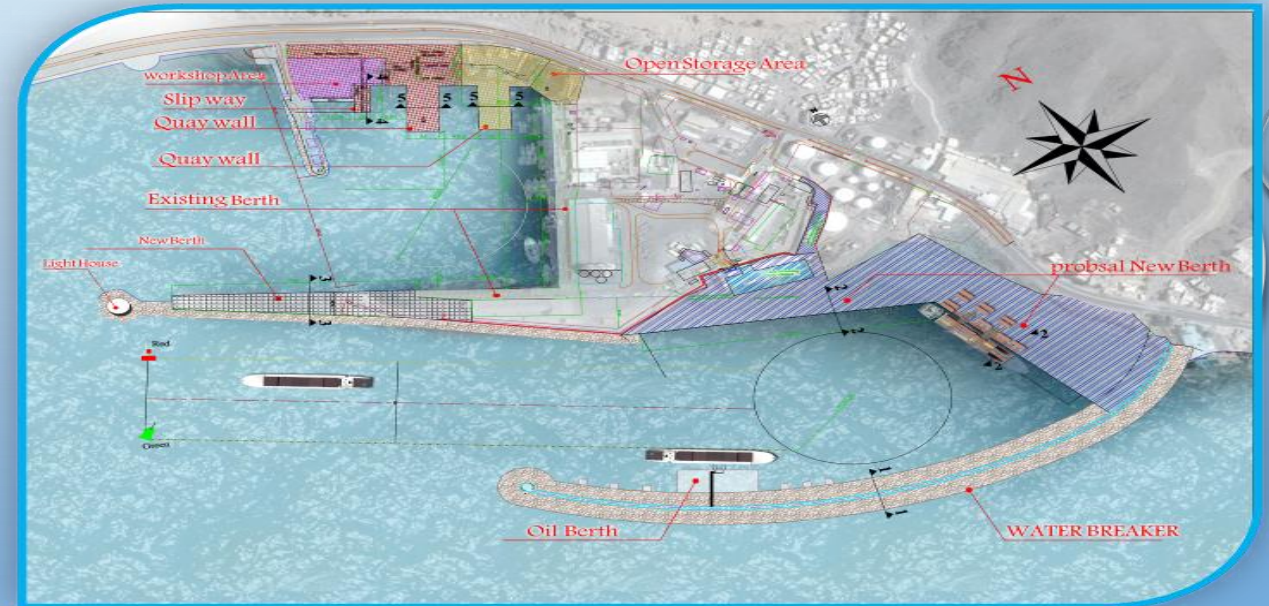


## THE FIRST PROJECT

(THE PROJECT TO DEVELOP AND EXPAND THE CURRENT PORT OF MUKALLA) WITH A 2 DIFFERENT PROPOSALS :

THE FIRST PROPOSAL: EXTENDING THE MAIN BREAKWATER AND BUILDING A 300-METER QUAY ALONG BERTH NO. (1).

THE SECOND PROPOSAL: BUILDING A NEW BREAKWATER AND BUILDING THREE BERTHS FOR THE BACK AREA LOCATED BEHIND THE MAIN BREAKWATER.



## THE SECOND PROJECT

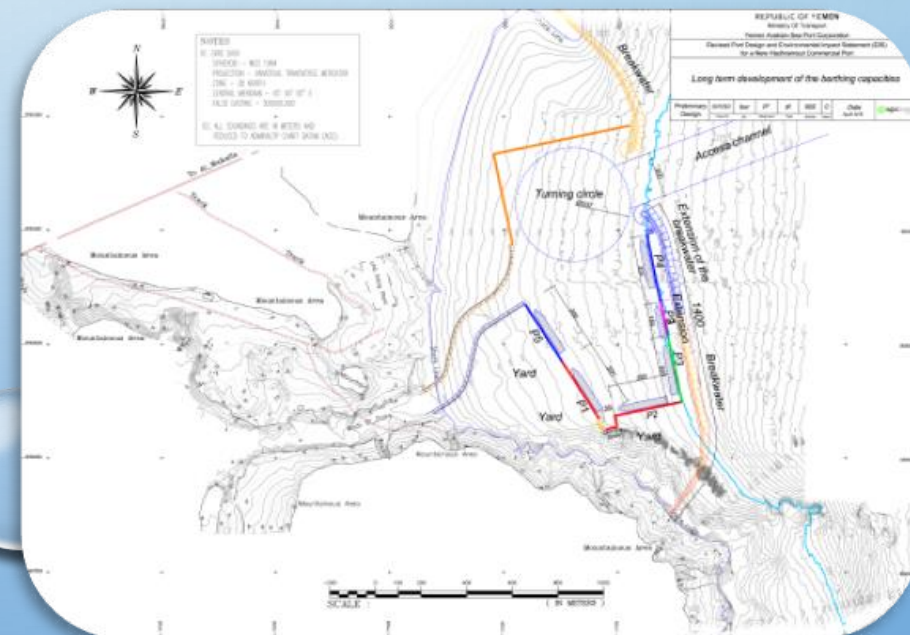
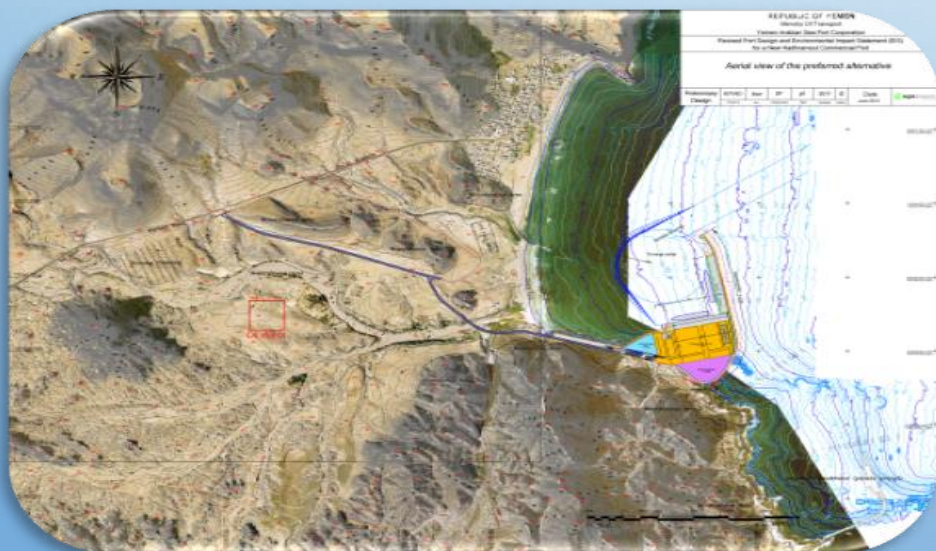
(BURUM COMMERCIAL PORT CONSTRUCTION PROJECT IN HADRAMOUT GOVERNORATE):

THE AREA OF THE PORT IS (11,888,236) SQUARE METRES. PRELIMINARY SITE STUDIES HAVE BEEN CONDUCTED AS FOLLOWS:

CONSTRUCTING (2) BERTHS WITH A LENGTH OF (700) METERS, WITH A DRAFT OF (14) METERS.

CONSTRUCTING ONE BREAKWATER WITH A LENGTH OF (1000) METERS.

THE TURNING AREA IS (420) METERS.





## THE THIRD PROJECT:

THE PROJECT TO ESTABLISH THE PORT OF AL-DHABA IN HADRAMAWT GOVERNORATE, UNDER THE BOT SYSTEM: THE PORT AREA IS (1,800,000) SQUARE METERS. PRELIMINARY SITE STUDIES HAVE BEEN CONDUCTED AS FOLLOWS:  
CONSTRUCTING (6) BERTHS WITH A LENGTH OF (4,400) M WITH A DRAFT OF (12-16) M.  
ESTABLISHMENT OF (2) BREAKWATERS.  
THE TURNING DIAMETER IS (550) M.





#### **FOURTH PROJECT:**

CONSTRUCTION OF QENA PORT IN SHABWA GOVERNORATE):  
THE TOTAL AREA RESERVED FOR THE PROJECT IS (34,800,000) SQUARE METERS AND IS  
CONSIDERED A PROMISING LAND DUE TO ITS NATURAL CHARACTERISTICS SUITABLE FOR  
ESTABLISHING A STRATEGIC PORT IN THE REGION.

#### **FIFTH PROJECT:**

(CONSTRUCTION OF QURMA PORT IN SOCOTRA GOVERNORATE):  
CONSTRUCTING (6) BERTHS WITH A LENGTH OF (1,115) METERS, WITH A DRAFT OF (3-  
10) METERS.  
CONSTRUCTING (2) BREAKWATERS WITH A LENGTH OF (2,800) METERS.  
THE TURNING DIAMETER IS (550) METERS





## Sixth Project:

(Construction of Khalafout Port in Al-Mahra Governorate):

Preliminary site studies have been conducted as follows:

Constructing (3) berths with a length of (1,200) meters and a draft of (15) meters.

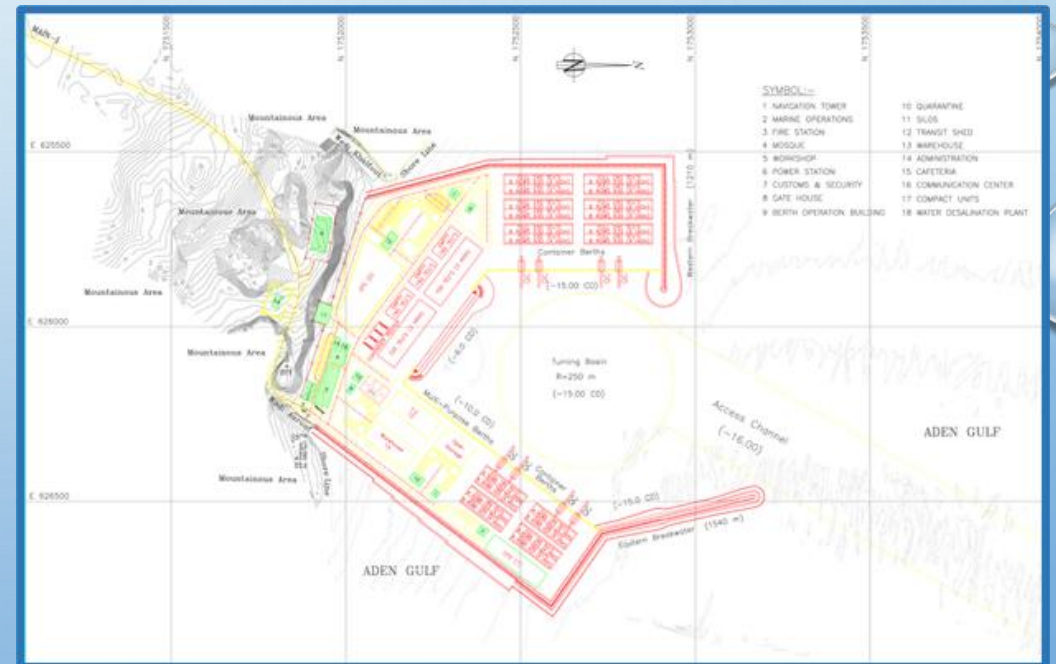
Constructing (2) breakwaters with a length of (2,750) meters and the turning area is (500) meters.

## The seventh project:

(Establishment of a sea port in Al-Mahra Governorate - Qishn - with the B.O.T system):

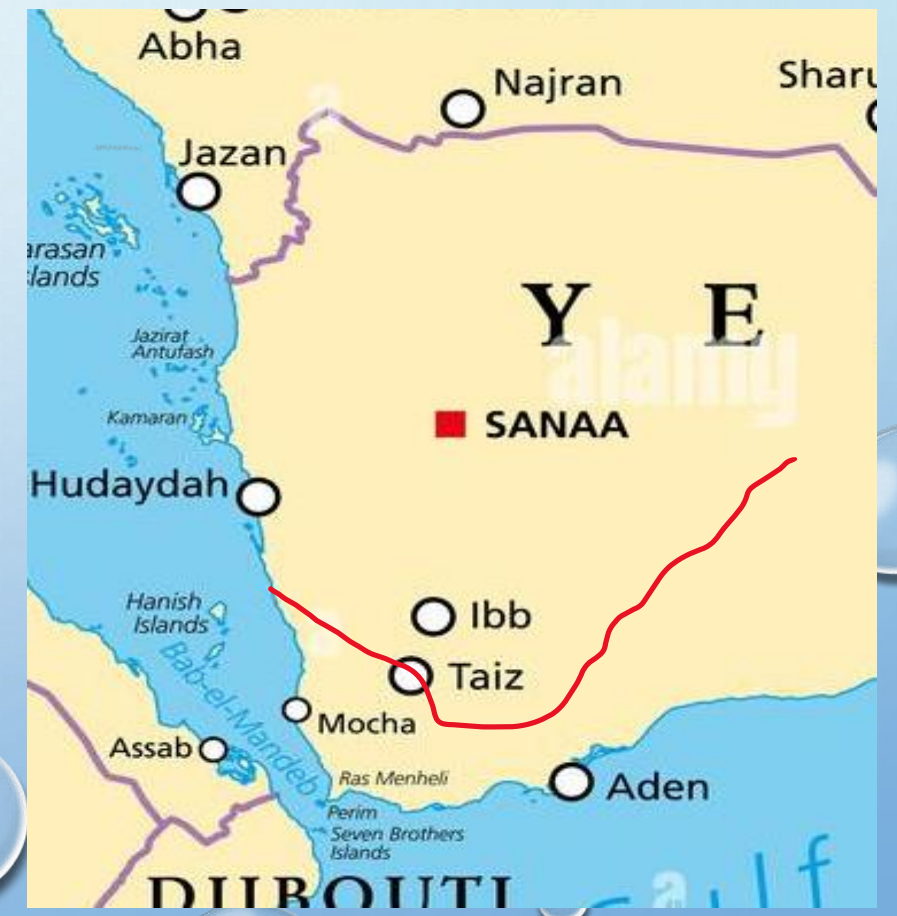
The Qishn port project is one of the investment projects should be implemented by the private sector under the B.O.T. system

It is a project to establish a specialised seaport for the export of mineral stones.





# POPULATION DENSITY, POLITICAL INFLUENCE, AND POTENTIAL PORTS







# UNVIM MISSION TO YEMEN

**IN ORDER TO FACILITATE COMMERCIAL CARGO FLOWS INTO YEMEN, AND IN ACCORDANCE WITH THE UNITED NATIONS SECURITY COUNCIL RESOLUTION 2216 (2015), THE UNITED NATIONS OFFICE FOR PROJECT SERVICES (UNOPS) OPERATIONALIZED THE UNITED NATIONS VERIFICATION AND INSPECTION MECHANISM FOR YEMEN (UNVIM).**

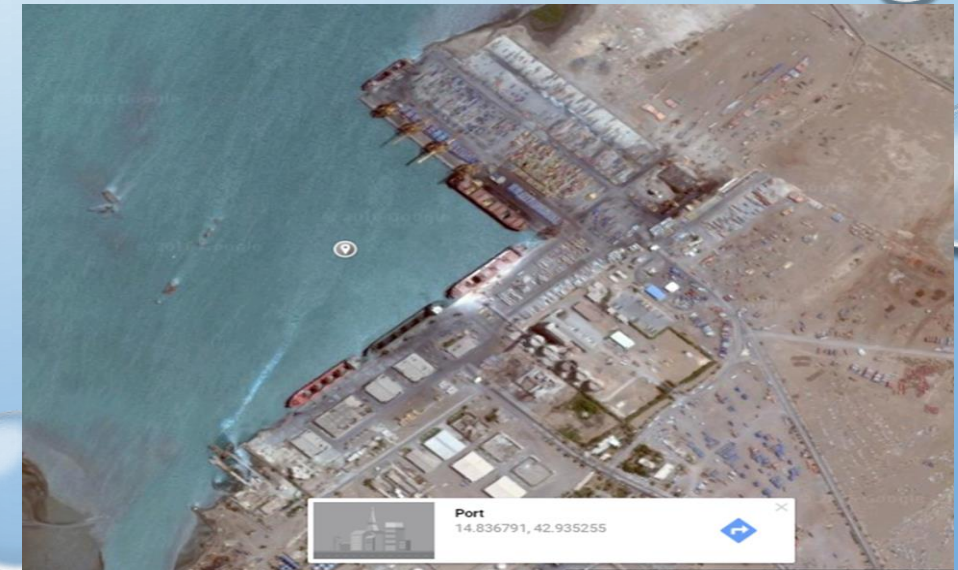
**THE MECHANISM OVERSEES THE MONITORING AND INSPECTION SERVICES OF COMMERCIAL AND BILATERAL ASSISTANCE CARGO DESTINED FOR YEMENI RED SEA PORTS HODEIDAH ,SALIF AND RAS ISA.**





# HODEIDAH PORT BETWEEN THE ROCK AND HARD PLACE

- CONTAINER BERTH 700 METER (GANTRY CRANES NOT AVAILABLE)
- GENERAL CARGO BERTH 1 000 METER
- TWO OIL JETTIES





# SALIF PORT

## DEEP, SHELTERED AND POTENTIAL

- BULK AND GENERAL CARGO TERMINAL
- 450 METERS LENGTH
- 14 METER DEPTH





# MOKHA PORT AN UPGRADE TO A MULTIMODAL TRANSPORT HUB

- TRADITIONAL REGIONAL DHOW PORT
- LIMITED BERTH LENGTH
- PORT EXPANSION VISIBILITY PLAN
- NAVIGATIONAL CHANNEL DREDGING
- A NEW AIRPORT ESTABLISHED 2023( MOKHA TAIZ AIRPORT)





**THANK YOU**

