



PORT OF BEIRUT



République Libanaise
Gestion et Exploitation du
PORT DE BEYROUTH

TABLE OF CONTENTS

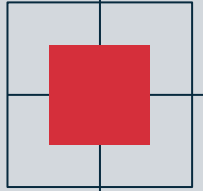
01 Location

02 History

03 August 4 Explosion

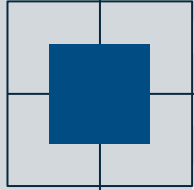
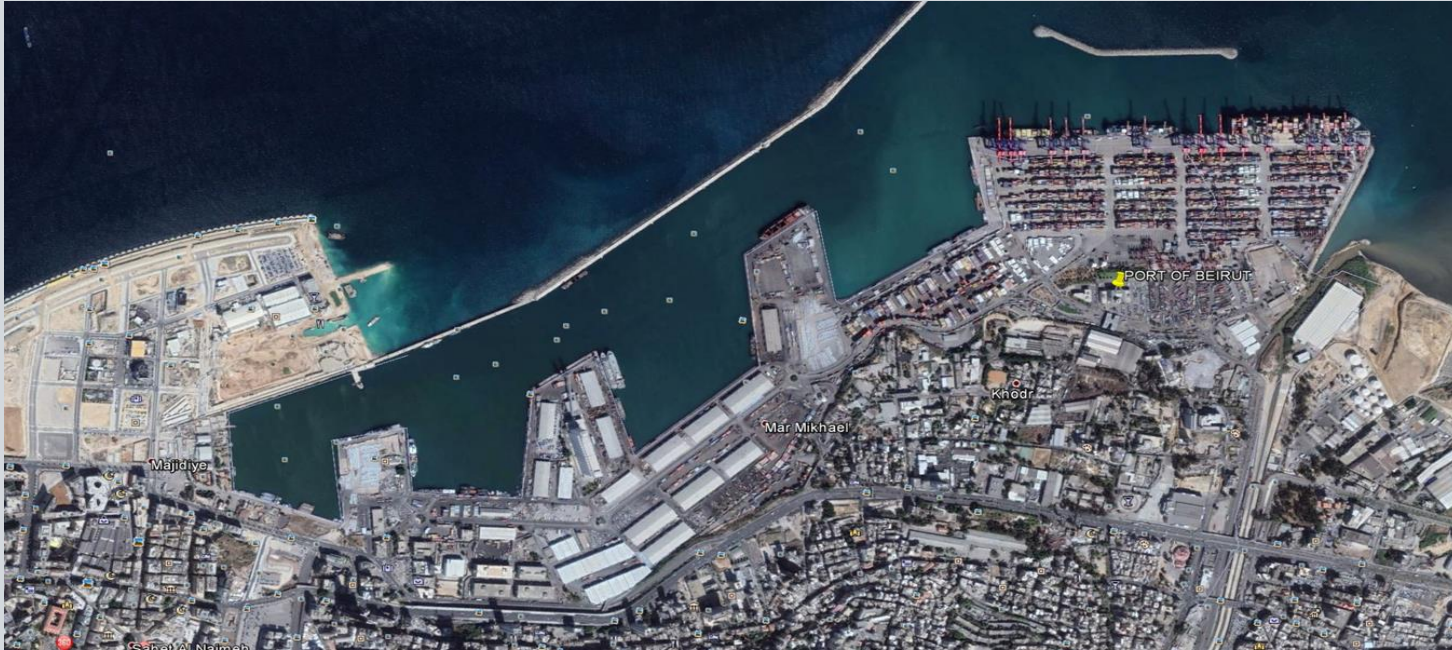
04 Statistics

05 Future
Development Plans



Location

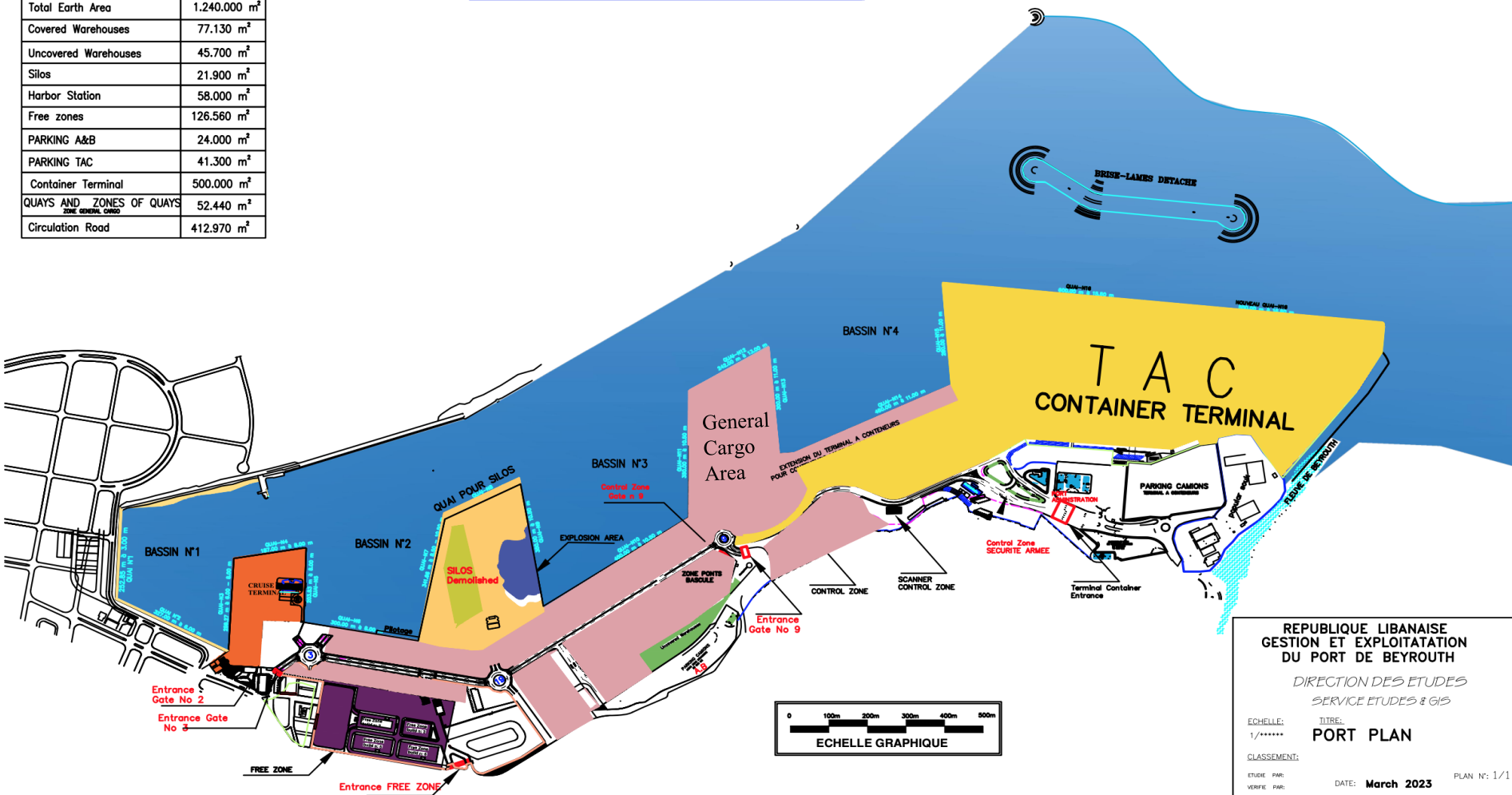
The Port of Beirut is located in the capital city of Lebanon, Beirut. Situated on the eastern Mediterranean coast, it serves as a significant maritime gateway connecting Lebanon to international trade routes.



OCCUPATIONS AND SURFACES

SURFACE of Water	1.500.000 m ²
Total Earth Area	1.240.000 m ²
Covered Warehouses	77.130 m ²
Uncovered Warehouses	45.700 m ²
Silos	21.900 m ²
Harbor Station	58.000 m ²
Free zones	126.560 m ²
PARKING A&B	24.000 m ²
PARKING TAC	41.300 m ²
Container Terminal	500.000 m ²
QUAYS AND ZONES OF QUAYS <small>ZONE GENERAL CARGO</small>	52.440 m ²
Circulation Road	412.970 m ²

PORT DE BEYROUTH



REPUBLIQUE LIBANAISE
GESTION ET EXPLOITATION
DU PORT DE BEYROUTH

DIRECTION DES ETUDES
SERVICE ETUDES & GIS

ECHELLE: 1/*****
TITRE: PORT PLAN

CLASSEMENT:
ETUDE PAR: DATE: March 2023 PLAN N°: 1/1
VERIFIE PAR:

Port History

1887

Ottoman

Ottoman authority gave concession of the port to an Ottoman company

1960

Lebanese

End of concession, and a Lebanese company managed and operated the port for 30 years

1990

**Ministerial
Committee**

The Council of Ministers created a ministerial committee to manage the port

1993

**Temporary
Committee**

The Lebanese government forced a temporary committee to manage the port

August 4th Explosion

- ❑ Despite the horrific explosion on August 4, 2020 Port of Beirut resumed its operations 2 days after the blast.
- ❑ The General Cargo Area was the most affected area at the port.

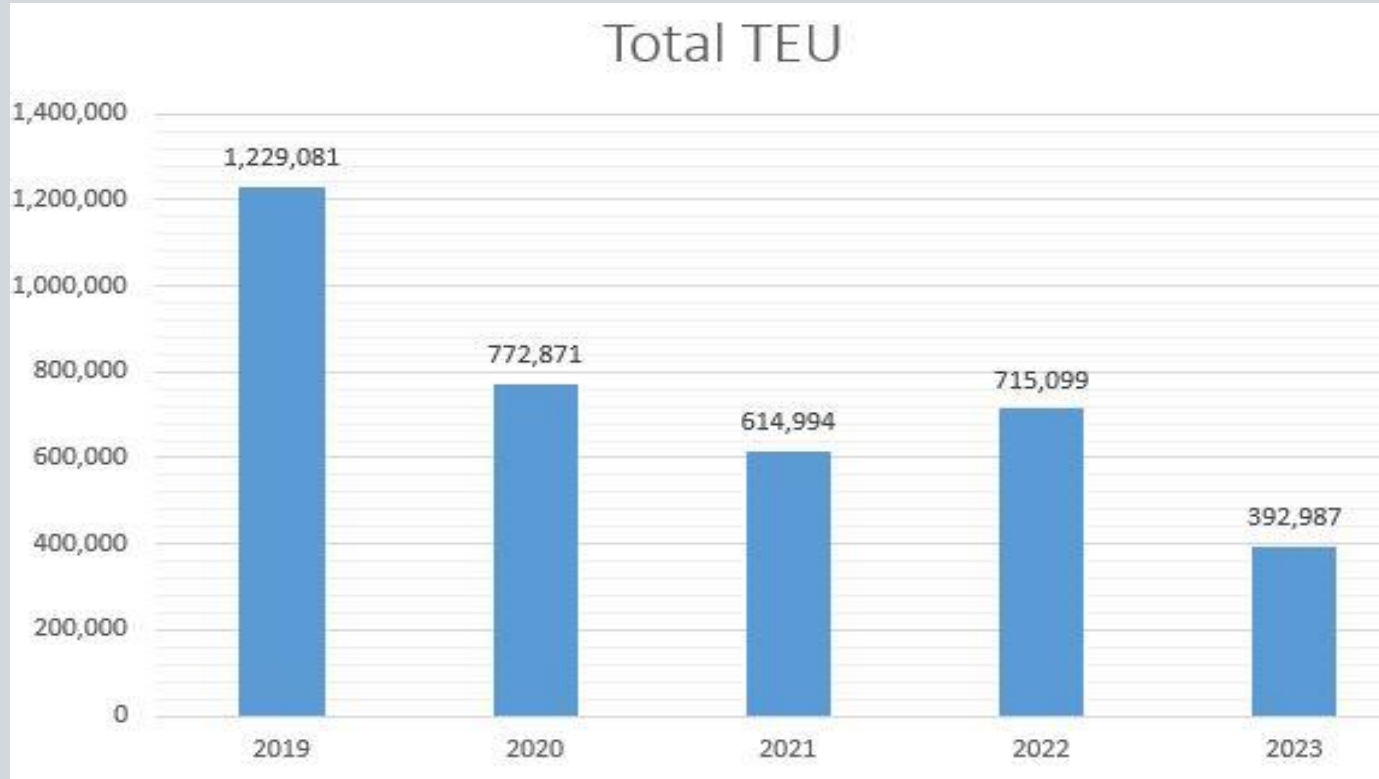




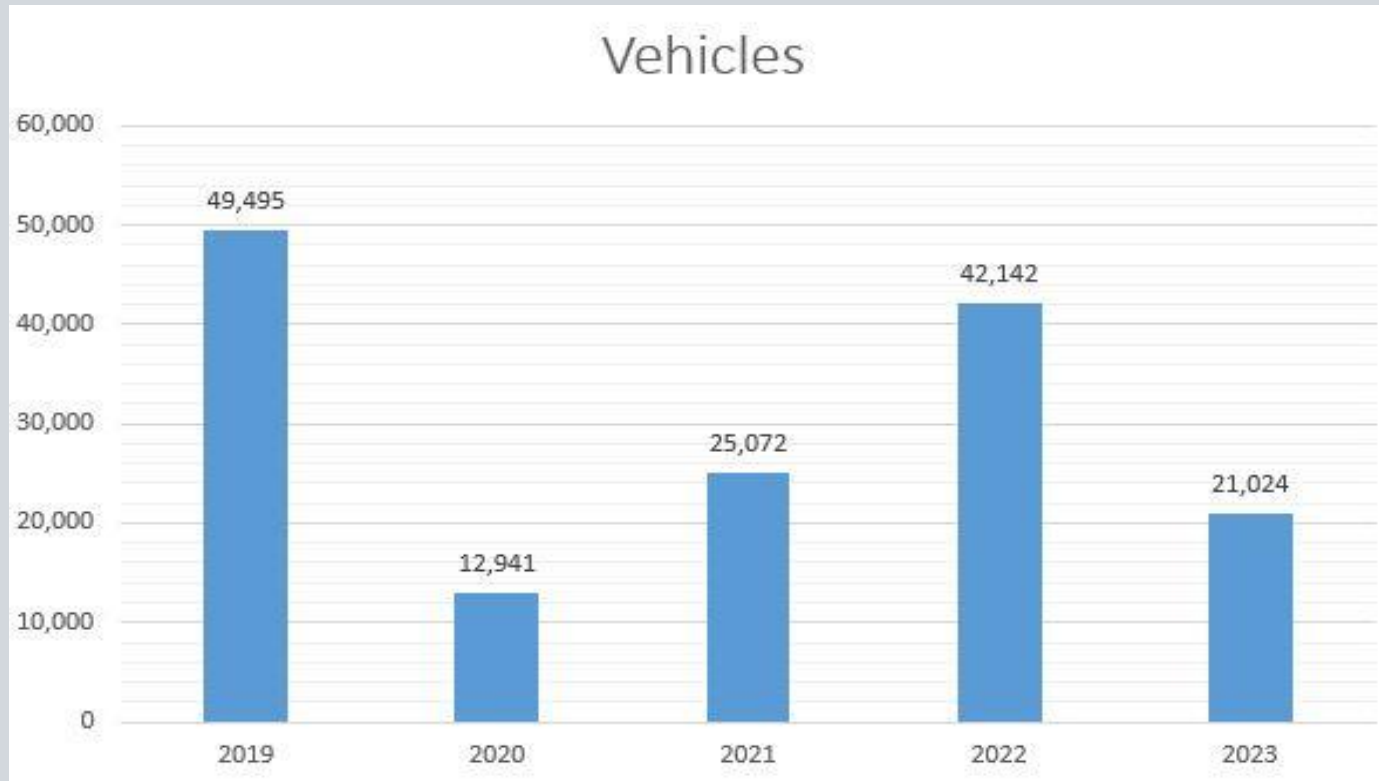
74,837

TEU reached on June 2023

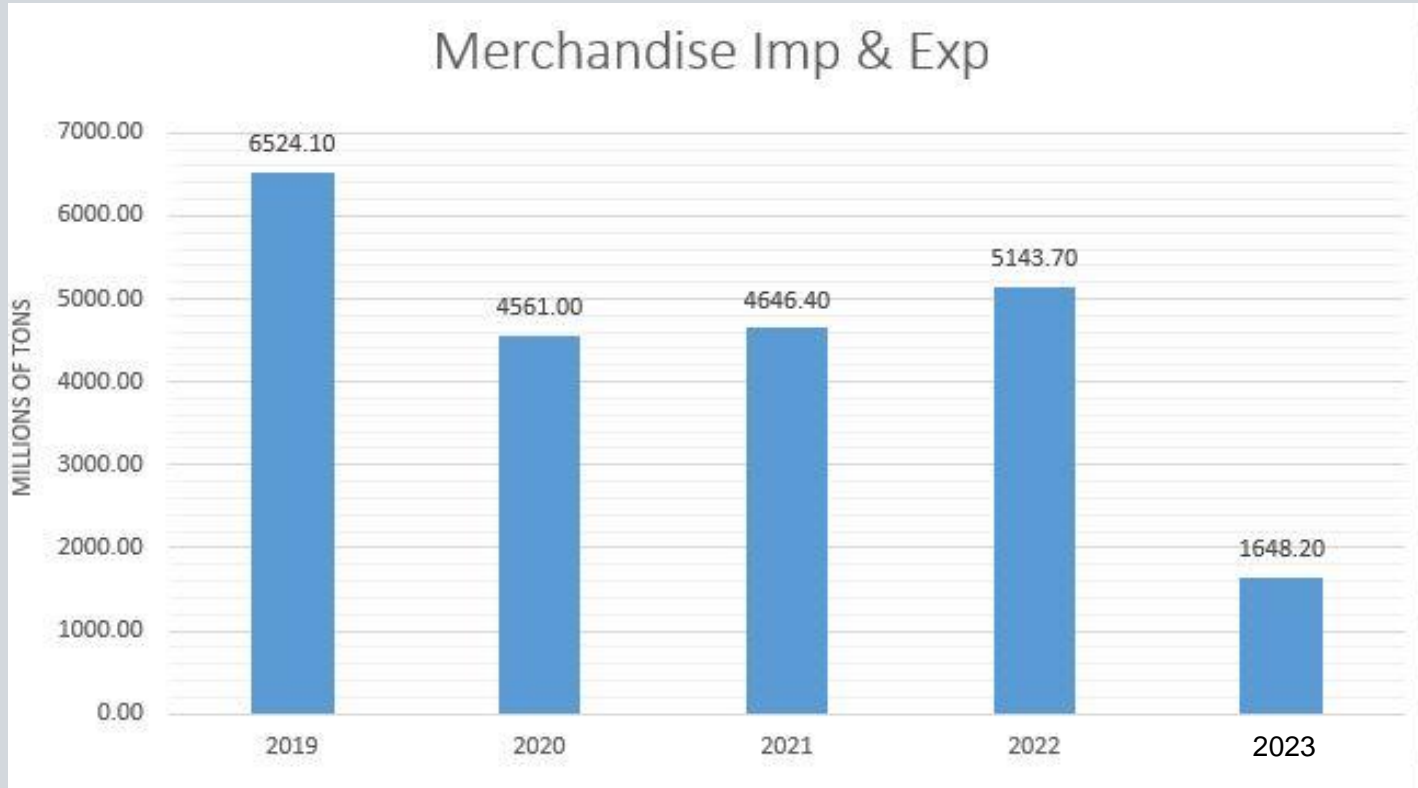
Total TEU (In/Out/Full/Empty, Local+ Transshipment)



Vehicles



Merchandise Import and Export

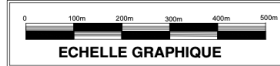
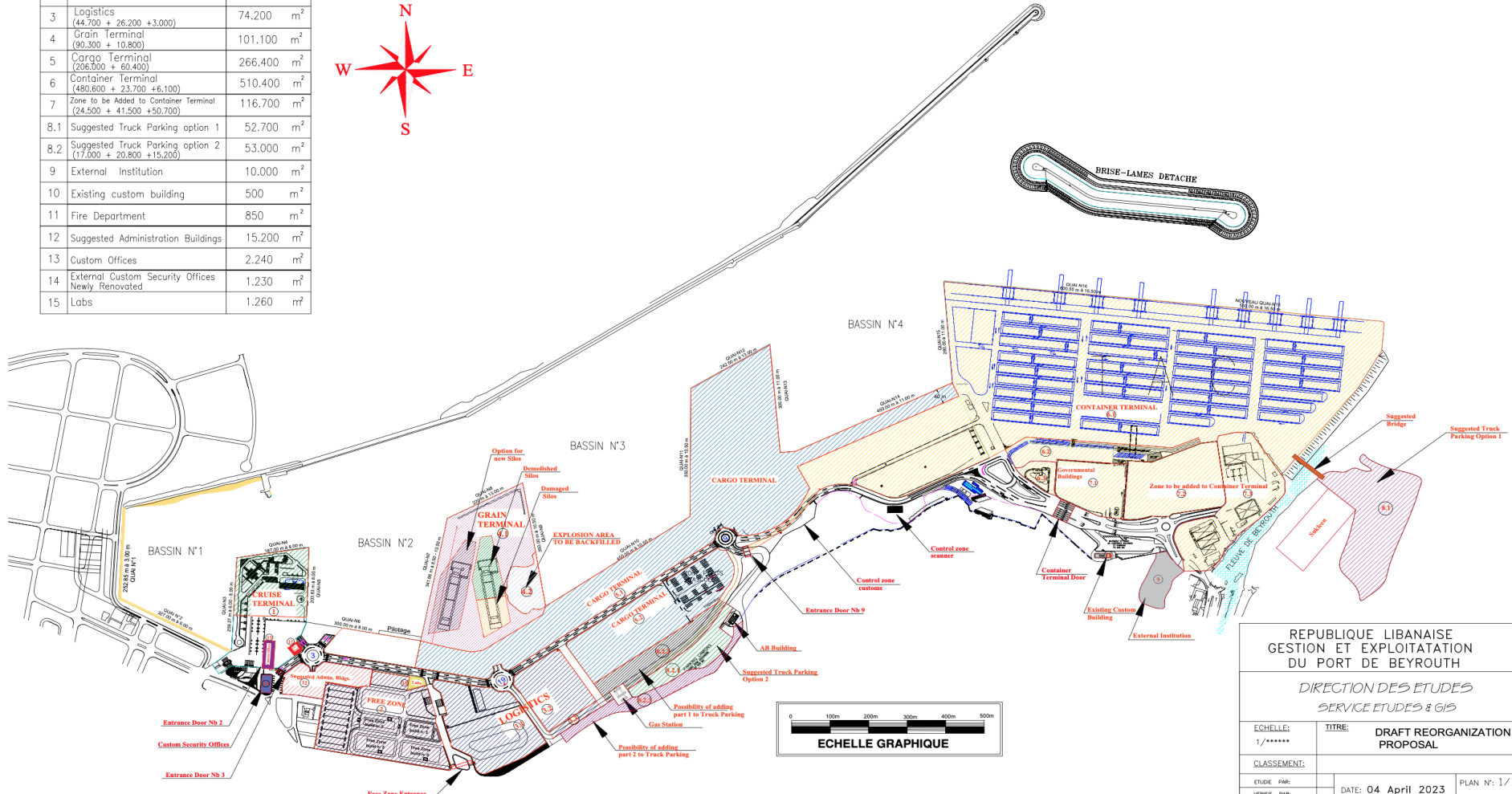
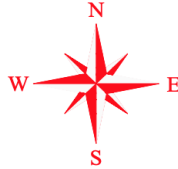


Future Development Plans



PORT DE BEYROUTH

1	Cruise Terminal	32.600	m ²
2	Free Zone	65.000	m ²
3	Logistics (44.700 + 26.200 + 3.000)	74.200	m ²
4	Grain Terminal (90.300 + 10.800)	101.100	m ²
5	Cargo Terminal (206.000 + 60.400)	266.400	m ²
6	Container Terminal (480.600 + 23.700 + 6.100)	510.400	m ²
7	Zone to be Added to Container Terminal (24.500 + 41.500 + 50.700)	116.700	m ²
8.1	Suggested Truck Parking option 1	52.700	m ²
8.2	Suggested Truck Parking option 2 (17.000 + 20.800 + 15.200)	53.000	m ²
9	External Institution	10.000	m ²
10	Existing custom building	500	m ²
11	Fire Department	850	m ²
12	Suggested Administration Buildings	15.200	m ²
13	Custom Offices	2.240	m ²
14	External Custom Security Offices Newly Renovated	1.230	m ²
15	Labs	1.260	m ²



REPUBLIQUE LIBANAISE GESTION ET EXPLOITATION DU PORT DE BEYROUTH	
DIRECTION DES ETUDES SERVICE ETUDES & GIS	
ECHELLE:	TITRE: DRAFT REORGANIZATION PROPOSAL
1/*****	
CLASSEMENT:	
ETUDE PAR:	DATE: 04 April 2023
VERIFIE PAR:	PLAN N°: 1/1

THANKS!

Does anyone have any questions?
pb-dir@portdebeyrouth.com
www.portdebeyrouth.com

