



Alumil
Building excellence every day

www.alumil.com



Integrity



Team Spirit



Initiative



Loyalty



Meraki

Values



Establishment of the Company by Mylonas family

1989

Production capacity of 6.000 tons / year

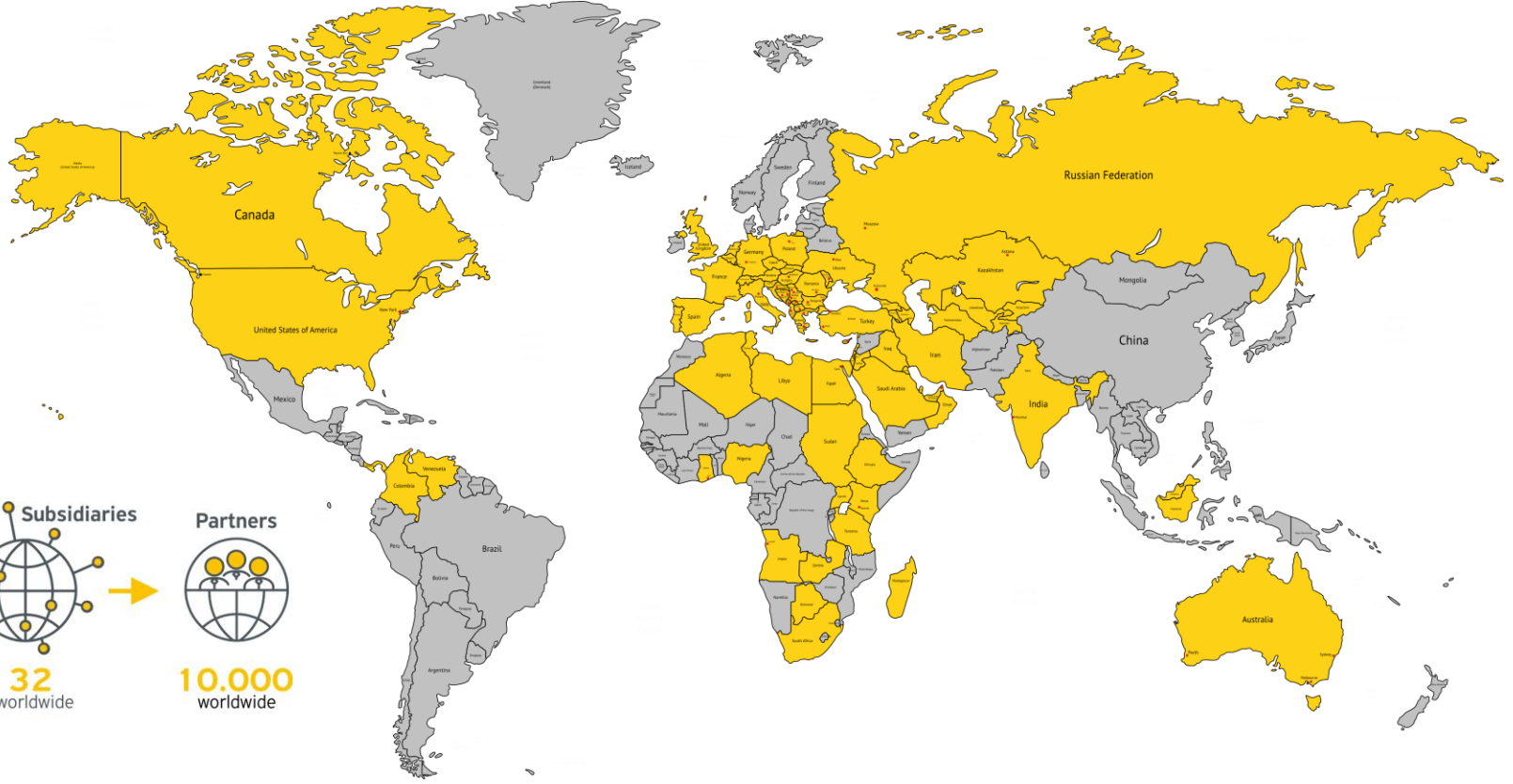
1993

Introduction of holistic architectural systems

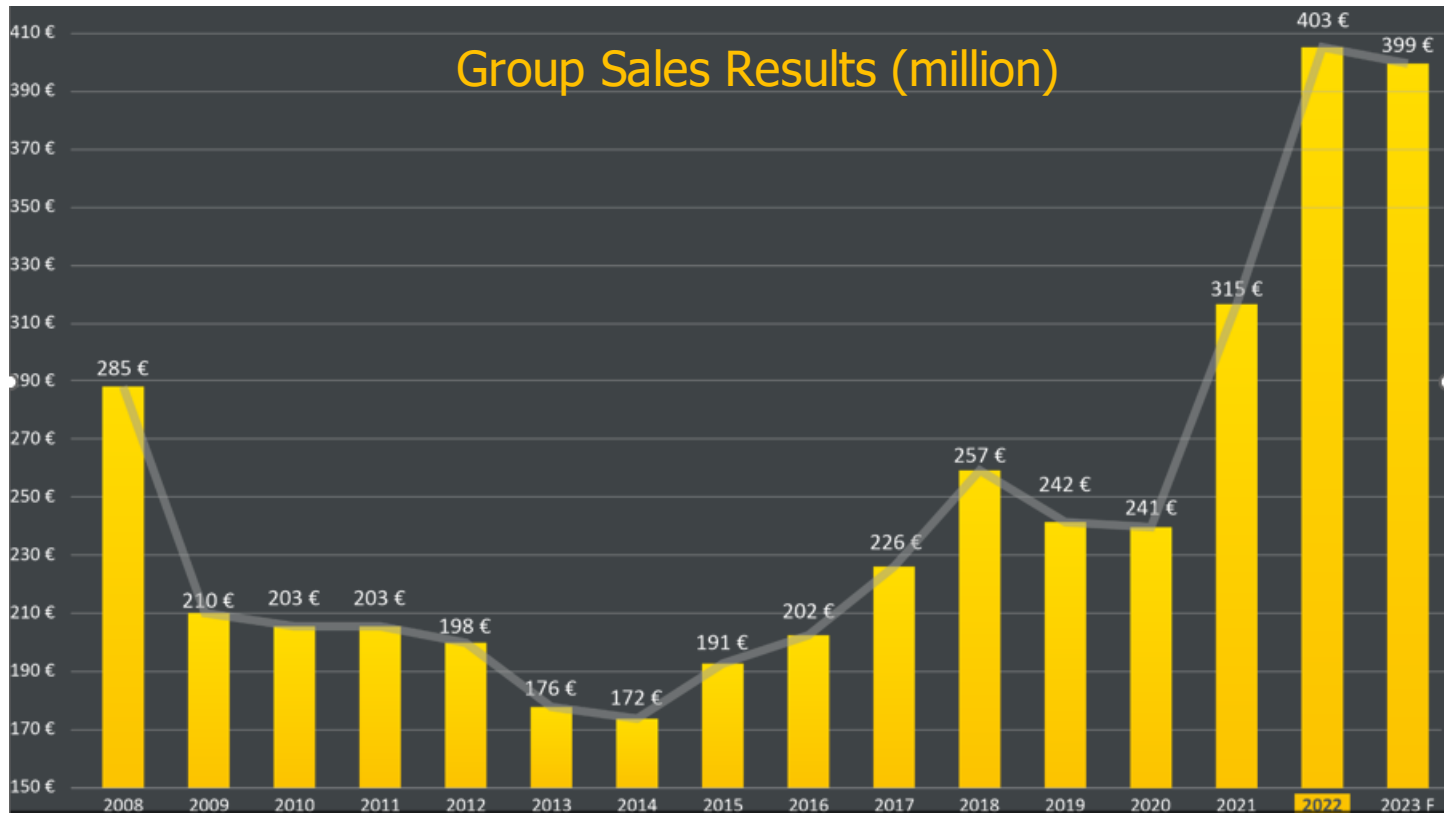
1995

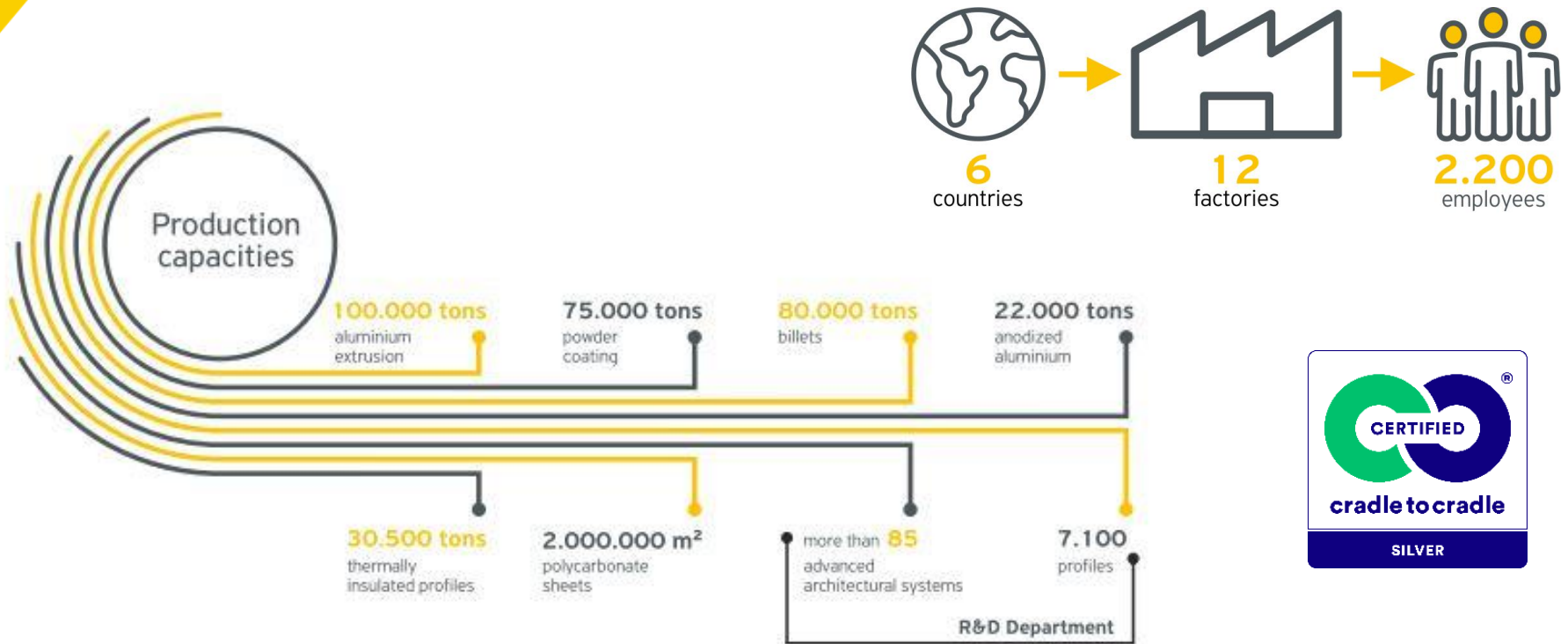
Additional production line of 10.000 tons / year production capacity

1997



1997 Romania
1998 Albania, Bulgaria
1999 Ukraine
2000 Germany, Cyprus, Egypt, North Macedonia
2003 Serbia
2004 Bosnia, Turkey
2005 Montenegro
2006 France
2007 United Arab Emirates
2008 United States of America
2009 Kosovo
2010 Russia
2010 Kenya, Croatia
2015 India, Australia





2007

Water recycling across the entire production process.
80% Reduction in extrusion process.
40% Reduction in Powder coating application



2008

By changing our power supply from LPG to natural gas we reduced our overall carbon footprint by **65%**



2009

Collection and recycling / reuse of excess powder coating



2008

Environmental upgrade of our powder coating line – Reduction of the use of chemical compounds during the liquid waste process. Use completely chrome free dyeing processes.



2010

Inhouse foundry partially powered by solar energy



2007

Overall electricity consumption by **12%**



2017

We replaced all HPS lamps of our production facilities with new ecofriendly LED lamps, saving **80%** in electrical energy consumed for lighting



2014

We apply a holistic recycling approach along our entire production plant. Notably, on 2014 we recycled approximately 1000 tonnes of non-metallic waste.



PLATINUM
80+ POINTS



GOLD
60 - 79 POINTS



SILVER
50 - 59 POINTS



CERTIFIED
40 - 49 POINTS

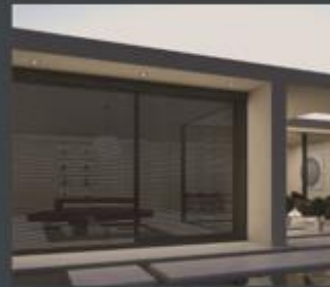




Hinged windows and doors



Sliding windows and doors



Shutters and blinds



Folding doors



Railings



Fire resistant doors and heavy-duty doors



Curtain walls and facades



Interior partitions



Atriums and conservatories



Shading



Wall cladding



Pergolas



Fences



Decking



Photovoltaic panel



Alumit

Fire Rated Systems

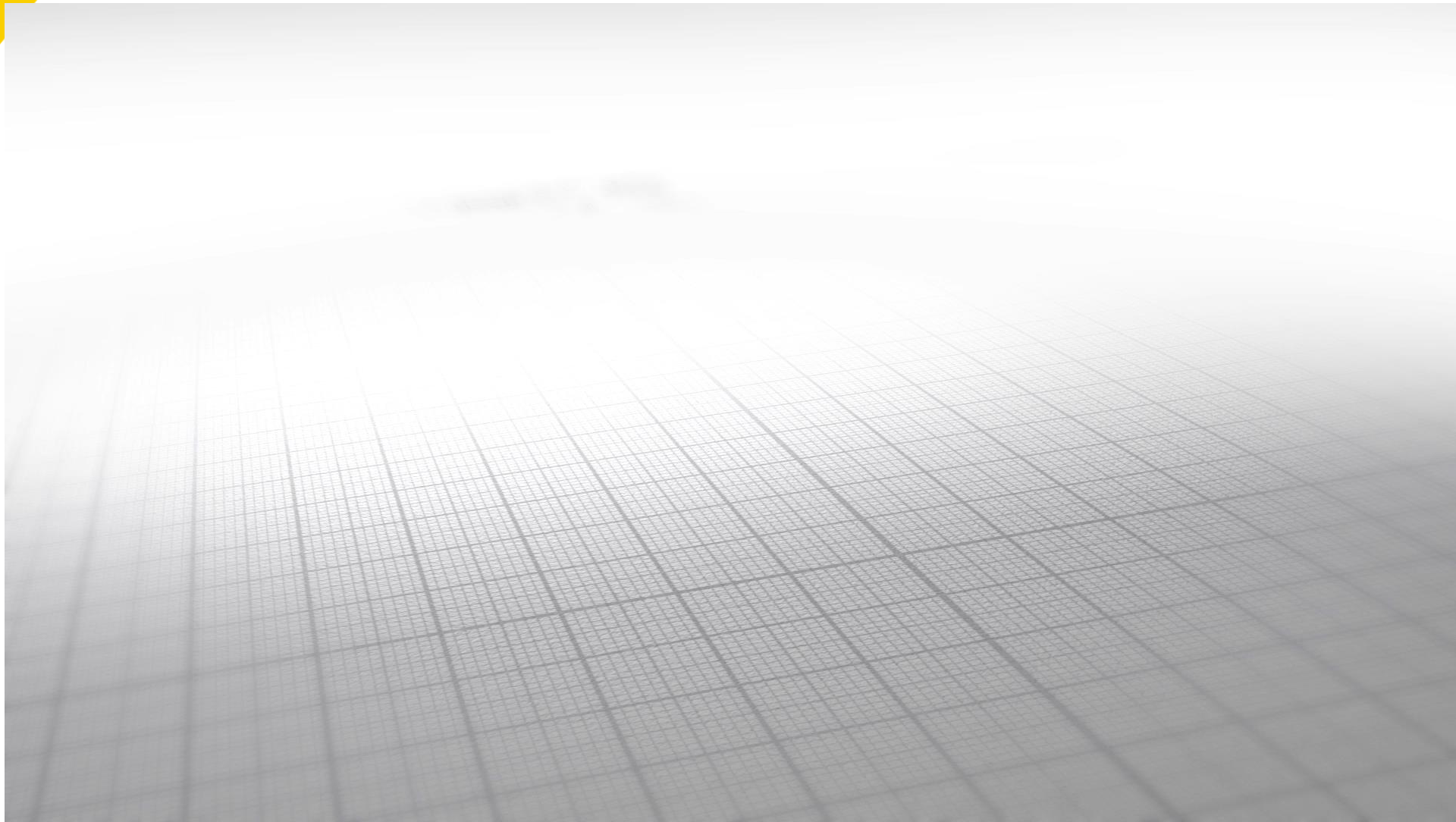




Alumil



Innovative Products-MAGNETIC SLIDING SOLUTIONS



Alumil's Presence in the GCC

- Since 2007
- 60 employees in Dubai
- New Showroom in Dubai
- 2 Warehouses in Dubai
- Subsidiary in KSA and warehouse facilities
- Presence in Qatar, Bahrain, Kuwait, Oman, Lebanon, Jordan, Iraq



Alumil's Presence in Egypt

- **Since 2003**
- 22000 sqm production facilities
- Employees from 55 increased to 140
- Investment in Powder Coating plant
- Investments 10 millions from 2019-2023
- 3millions investments 2024-2025
- Sales hub for COMESA Countries





Alumil



Six Senses The Palm, DUBAI

Palm Jumeirah, Dubai - U.A.E.

The Alumil logo is positioned in the top left corner. It features the word "Alumil" in a bold, sans-serif font. A yellow diagonal bar is partially visible on the left side of the image, overlapping the logo.

Alumil

The main image is a digital rendering of a modern building complex built into a rugged, rocky desert landscape. The building consists of several interconnected, low-profile structures with large glass facades. The interior lights are on, revealing modern furniture and decor. The building is set against a backdrop of dark, craggy rock formations under a twilight sky with a crescent moon. In the distance, a body of water, likely the Red Sea, is visible. A yellow diagonal bar is present in the bottom right corner, partially overlapping the text.

Desert Rock, Red sea, KSA

The logo for Alumil, featuring the word "Alumil" in a bold, black, sans-serif font. A yellow diagonal graphic element is positioned in the top-left corner of the image, partially overlapping the logo.

Al Sahel Resort, Bahrain

Mandana - Bahrain



Alumil



**The Pixel by Makers District,
Abu Dhabi**

Abu Dhabi - UAE



Alumil

QETAIFAN Island North, Qatar

Qatar



Alumil

Sustainable City, Dubai *Dubai - U.A.E.*

The logo for Alumil, featuring the word "Alumil" in a bold, sans-serif font. The letter "i" has a yellow dot. The logo is positioned in the top left corner of the image, partially overlapping a yellow geometric graphic consisting of several overlapping diagonal rectangles.A wide-angle photograph of a large, modern, light-colored building with a prominent central entrance. The building has a flat roof and a large glass facade. The entrance is framed by a large, dark, rectangular structure. The building is surrounded by many tall palm trees and a paved walkway. The sky is clear and blue. In the foreground, there are some low-lying plants and a yellow diagonal graphic element.

**NEW CAPITAL - MINISTRIES DISTRICT,
EGYPT**

The logo for Alumil, featuring the word "Alumil" in a bold, black, sans-serif font. A yellow diagonal graphic element is visible in the top-left corner of the overall image.

Alumil



**THE BUTTERFLY TOWER,
CANADA**

Vancouver - Canada

The Alumil logo is positioned in the top left corner. It features the word "Alumil" in a bold, dark blue, sans-serif font. A yellow and blue geometric graphic, consisting of overlapping diagonal shapes, is located to the left of the logo.

Alumil

The text "VANCOUVER HOUSE, CANADA" is located in the bottom right corner. It is written in a bold, yellow, sans-serif font and is set against a dark blue background that is part of a diagonal graphic element.

VANCOUVER HOUSE, CANADA



alumil

1550 ALBERNI, CANADA

Vancouver - Canada



CENTURY PLAZA, LOS ANGELES

Los Angeles - USA



Alumil



THE CROWN HOTEL, AUSTRALIA

Sydney - Australia



*Thank you for your
attention*